

PHILIPPINE BIDDING DOCUMENTS

**Procurement of
INFRASTRUCTURE
PROJECTS**

Government of the Republic of the Philippines

**Sixth Edition
July 2020**

Preface

These Philippine Bidding Documents (PBDs) for the procurement of Infrastructure Projects (hereinafter referred to also as the “Works”) through Competitive Bidding have been prepared by the Government of the Philippines for use by all branches, agencies, departments, bureaus, offices, or instrumentalities of the government, including government-owned and/or -controlled corporations, government financial institutions, state universities and colleges, local government units, and autonomous regional government. The procedures and practices presented in this document have been developed through broad experience, and are for mandatory use in projects that are financed in whole or in part by the Government of the Philippines or any foreign government/foreign or international financing institution in accordance with the provisions of the 2016 revised Implementing Rules and Regulations (IRR) of Republic Act (RA) No. 9184.

The PBDs are intended as a model for admeasurements (unit prices or unit rates in a bill of quantities) types of contract, which are the most common in Works contracting.

The Bidding Documents shall clearly and adequately define, among others: (i) the objectives, scope, and expected outputs and/or results of the proposed contract; (ii) the eligibility requirements of Bidders; (iii) the expected contract duration; and (iv) the obligations, duties, and/or functions of the winning Bidder.

Care should be taken to check the relevance of the provisions of the PBDs against the requirements of the specific Works to be procured. If duplication of a subject is inevitable in other sections of the document prepared by the Procuring Entity, care must be exercised to avoid contradictions between clauses dealing with the same matter.

Moreover, each section is prepared with notes intended only as information for the Procuring Entity or the person drafting the Bidding Documents. They shall not be included in the final documents. The following general directions should be observed when using the documents:

- a. All the documents listed in the Table of Contents are normally required for the procurement of Infrastructure Projects. However, they should be adapted as necessary to the circumstances of the particular Project.
- b. Specific details, such as the “*name of the Procuring Entity*” and “*address for bid submission*,” should be furnished in the Instructions to Bidders, Bid Data Sheet, and Special Conditions of Contract. The final documents should contain neither blank spaces nor options.
- c. This Preface and the footnotes or notes in italics included in the Invitation to Bid, BDS, General Conditions of Contract, Special Conditions of Contract, Specifications, Drawings, and Bill of Quantities are not part of the text of the final document, although they contain instructions that the Procuring Entity should strictly follow.
- d. The cover should be modified as required to identify the Bidding Documents as to the names of the Project, Contract, and Procuring Entity, in addition to date of issue.

- e. Modifications for specific Procurement Project details should be provided in the Special Conditions of Contract as amendments to the Conditions of Contract. For easy completion, whenever reference has to be made to specific clauses in the Bid Data Sheet or Special Conditions of Contract, these terms shall be printed in bold typeface on Sections I (Instructions to Bidders) and III (General Conditions of Contract), respectively.
- f. For guidelines on the use of Bidding Forms and the procurement of Foreign-Assisted Projects, these will be covered by a separate issuance of the Government Procurement Policy Board.

TABLE OF CONTENTS

GLOSSARY OF	5
TERMS, ABBREVIATIONS, AND ACRONYMS	5
SECTION I. INVITATION TO BID	7
ERROR! BOOKMARK NOT DEFINED.	
SECTION II. INSTRUCTIONS TO BIDDERS	10
1. Scope of Bid.....	12
2. Funding Information	12
3. Bidding Requirements.....	12
4. Corrupt, Fraudulent, Collusive, Coercive, and Obstructive Practices	12
5. Eligible Bidders.....	13
6. Origin of Associated Goods	13
7. Subcontracts	13
8. Pre-Bid Conference	13
9. Clarification and Amendment of Bidding Documents.....	13
10. Documents Comprising the Bid: Eligibility and Technical Components	13
11. Documents Comprising the Bid: Financial Component	14
12. Alternative Bids	14
13. Bid Prices	14
14. Bid and Payment Currencies	15
15. Bid Security.....	15
16. Sealing and Marking of Bids.....	15
17. Deadline for Submission of Bids	15
18. Opening and Preliminary Examination of Bids	15
19. Detailed Evaluation and Comparison of Bids	15
20. Post Qualification.....	16
21. Signing of the Contract	16
SECTION III. BID DATA SHEET	17
SECTION IV. GENERAL CONDITIONS OF CONTRACT.....	20
1. Scope of Contract.....	21
2. Sectional Completion of Works	21
3. Possession of Site	21
4. The Contractor’s Obligations.....	21

5.	Performance Security	22
6.	Site Investigation Reports	22
7.	Warranty.....	22
8.	Liability of the Contractor.....	22
9.	Termination for Other Causes.....	22
10.	Dayworks	23
11.	Program of Work.....	23
12.	Instructions, Inspections and Audits	23
13.	Advance Payment.....	23
14.	Progress Payments	23
15.	Operating and Maintenance Manuals.....	23
SECTION V. SPECIAL CONDITIONS OF CONTRACT		25
SECTION VI. SPECIFICATIONS		27
SECTION VII. DRAWINGS		29
SECTION VIII. BILL OF QUANTITIES		37
SECTION IX. CHECKLIST OF TECHNICAL AND FINANCIAL DOCUMENTS.....		62

Glossary of Terms, Abbreviations, and Acronyms

ABC – Approved Budget for the Contract.

ARCC – Allowable Range of Contract Cost.

BAC – Bids and Awards Committee.

Bid – A signed offer or proposal to undertake a contract submitted by a bidder in response to and in consonance with the requirements of the bidding documents. Also referred to as *Proposal* and *Tender*. (2016 revised IRR, Section 5[c])

Bidder – Refers to a contractor, manufacturer, supplier, distributor and/or consultant who submits a bid in response to the requirements of the Bidding Documents. (2016 revised IRR, Section 5[d])

Bidding Documents – The documents issued by the Procuring Entity as the bases for bids, furnishing all information necessary for a prospective bidder to prepare a bid for the Goods, Infrastructure Projects, and/or Consulting Services required by the Procuring Entity. (2016 revised IRR, Section 5[e])

BIR – Bureau of Internal Revenue.

BSP – Bangko Sentral ng Pilipinas.

CDA – Cooperative Development Authority.

Consulting Services – Refer to services for Infrastructure Projects and other types of projects or activities of the GOP requiring adequate external technical and professional expertise that are beyond the capability and/or capacity of the GOP to undertake such as, but not limited to: (i) advisory and review services; (ii) pre-investment or feasibility studies; (iii) design; (iv) construction supervision; (v) management and related services; and (vi) other technical services or special studies. (2016 revised IRR, Section 5[i])

Contract – Refers to the agreement entered into between the Procuring Entity and the Supplier or Manufacturer or Distributor or Service Provider for procurement of Goods and Services; Contractor for Procurement of Infrastructure Projects; or Consultant or Consulting Firm for Procurement of Consulting Services; as the case may be, as recorded in the Contract Form signed by the parties, including all attachments and appendices thereto and all documents incorporated by reference therein.

Contractor – is a natural or juridical entity whose proposal was accepted by the Procuring Entity and to whom the Contract to execute the Work was awarded. Contractor as used in these Bidding Documents may likewise refer to a supplier, distributor, manufacturer, or consultant.

CPI – Consumer Price Index.

DOLE – Department of Labor and Employment.

DTI – Department of Trade and Industry.

Foreign-funded Procurement or Foreign-Assisted Project – Refers to procurement whose funding source is from a foreign government, foreign or international financing institution as specified in the Treaty or International or Executive Agreement. (2016 revised IRR, Section 5[b]).

GFI – Government Financial Institution.

GOCC – Government-owned and/or –controlled corporation.

Goods – Refer to all items, supplies, materials and general support services, except Consulting Services and Infrastructure Projects, which may be needed in the transaction of public businesses or in the pursuit of any government undertaking, project or activity, whether in the nature of equipment, furniture, stationery, materials for construction, or personal property of any kind, including non-personal or contractual services such as the repair and maintenance of equipment and furniture, as well as trucking, hauling, janitorial, security, and related or analogous services, as well as procurement of materials and supplies provided by the Procuring Entity for such services. The term “related” or “analogous services” shall include, but is not limited to, lease or purchase of office space, media advertisements, health maintenance services, and other services essential to the operation of the Procuring Entity. (2016 revised IRR, Section 5[r])

GOP – Government of the Philippines.

Infrastructure Projects – Include the construction, improvement, rehabilitation, demolition, repair, restoration or maintenance of roads and bridges, railways, airports, seaports, communication facilities, civil works components of information technology projects, irrigation, flood control and drainage, water supply, sanitation, sewerage and solid waste management systems, shore protection, energy/power and electrification facilities, national buildings, school buildings, hospital buildings, and other related construction projects of the government. Also referred to as *civil works or works*. (2016 revised IRR, Section 5[u])

LGUs – Local Government Units.

NFCC – Net Financial Contracting Capacity.

NGA – National Government Agency.

PCAB – Philippine Contractors Accreditation Board.

PhilGEPS - Philippine Government Electronic Procurement System.

Procurement Project – refers to a specific or identified procurement covering goods, infrastructure project or consulting services. A Procurement Project shall be described, detailed, and scheduled in the Project Procurement Management Plan prepared by the agency which shall be consolidated in the procuring entity's Annual Procurement Plan. (GPPB Circular No. 06-2019 dated 17 July 2019)

PSA – Philippine Statistics Authority.

SEC – Securities and Exchange Commission.

SLCC – Single Largest Completed Contract.

UN – United Nations.

Section I. Invitation to Bid

Notes on the Invitation to Bid

The Invitation to Bid (IB) provides information that enables potential Bidders to decide whether to participate in the procurement at hand. The IB shall be posted in accordance with Section 21.2 of the 2016 revised IRR of RA No. 9184.

Apart from the essential items listed in the Bidding Documents, the IB should also indicate the following:

- a. The date of availability of the Bidding Documents, which shall be from the time the IB is first advertised/posted until the deadline for the submission and receipt of bids;
- b. The place where the Bidding Documents may be acquired or the website where it may be downloaded;
- c. The deadline for the submission and receipt of bids; and
- d. Any important bid evaluation criteria.

The IB should be incorporated into the Bidding Documents. The information contained in the IB must conform to the Bidding Documents and in particular to the relevant information in the Bid Data Sheet.



Project No. 2024-004

Republic of the Philippines
Department of Education

NATIONAL CAPITAL REGION
SCHOOLS DIVISION OFFICE OF MUNTINLUPA CITY

Invitation to Bid for the Upgrading of Electrical System

1. The **Schools Division Office-Muntinlupa City**, through the **DepEd Memorandum from Epimaco V. Densing III, Undersecretary for School Infrastructure and Facilities** with the subject **“Conduct of 2024 Early Procurement Activities (EPA) for the Various Sub-Project Components of the Basic Education Facilities Fund and Last Mile Schools Program”** intends to apply the sum of **Twenty-Two Million Two Hundred Fifty-One Thousand Nine Hundred Seventy Pesos and 63/100 (P22,251,970.63)** being the Approved Budget for the Contract (ABC) to payments under the contract for **Upgrading of Electrical System/ Project No. 2024-004**. Bids received in excess of the ABC for the lot shall be automatically rejected at bid opening.

Lot No.	Project Description	Name of School/s	ABC (PhP)	Contract Duration
1	Upgrading of Electrical System	Muntinlupa NHS	P 22,251,970.63	185 CD

2. The **Schools Division Office-Muntinlupa City** now invites bids for the above Procurement Project. Completion of the Works is required **185 Calendar Days**. Bidders should have completed a contract similar to the Project. The description of an eligible bidder is contained in the Bidding Documents, particularly, in Section II (Instructions to Bidders).
3. Bidding will be conducted through open competitive bidding procedures using non-discretionary **“pass/fail”** criterion as specified in the 2016 revised Implementing Rules and Regulations (IRR) of Republic Act (RA) No. 9184.
4. Interested bidders may obtain further information from the **Schools Division Office-Muntinlupa City** and inspect the Bidding Documents at the address given below from **8:00 am – 5:00 pm**.
5. A complete set of Bidding Documents may be acquired by interested Bidders on **May 8, 2024**, from the **BAC Secretariat at the Student Center for Life Skills Building (SCLS), Centennial Avenue, Laguerta, Tunasan, Muntinlupa** and the **website of the Procuring Entity** and upon payment of the applicable fee for the Bidding Documents, pursuant to the latest guidelines issued by the GPPB, in the amount of **Twenty-Five Thousand Pesos (P25,000.00)**. The Procuring entity shall allow the bidder to present its proof of payment for the fees **in person**.



Student Center for Life Skills Bldg., Centennial Ave, Brgy. Tunasan, Muntinlupa City
8805-9935, 8805-9940



sdo.muntinlupa@gmail.com



deped-muntinlupa.com

The Schedule and Venue of the procuring activities are as follows:

Activity	Date	Venue
Posting	May 8-15, 2024	PhilGEPS Procuring Entity's Website
Issuance of Bidding Documents	May 8 - 28, 2024 (8:00 am to 5:00 pm – Regular Office Hours)	Schools Division Office Muntinlupa City or thru the official email of SDO- Muntinlupa BAC
Pre-Bid Conference	May 16, 2024, Thursday, 1:30 pm	Invitation shall be sent by the BAC Secretariat-to the email address of the bidders
Submission and Opening of Bids	May 29, 2024, Wednesday, 1:30 pm	Schools Division Office Muntinlupa City- (SCLS Bldg. 4th floor Activity Center)

6. The **Schools Division Office-Muntinlupa City** will hold a Pre-Bid Conference¹ on **May 16, 2024, Thursday, 1:30 pm** via **blended modality (face-to-face and online)**, which shall be open to prospective bidders. Prospective Bidders shall obtain the Microsoft Teams ID from the authorized personnel of SDO-Muntinlupa City Bids and Awards Committee Secretariat.
7. Bids (in printed copies) must be duly received by the BAC Secretariat through manual submission to the office address as indicated below, or thru any courier on or before **May 29, 2024, Wednesday, 1:30 pm**. Late bids shall not be accepted.
8. All bids must be accompanied by a bid security in any of the acceptable forms and in the amount stated in **ITB** Clause 16.
9. Bid opening (face-to-face) shall be on **May 29, 2024, Wednesday, 1:30 pm** at **Schools Division Office-Muntinlupa City (SCLS Bldg. 4th floor Activity Center), Centennial Ave., Laguerta, Tunasan, Muntinlupa**. Bids will be opened in the presence of the bidders' representatives who choose to attend the activity.

¹ May be deleted in case the ABC is less than One Million Pesos (PhP1,000,000) where the Procuring Entity may not hold a pre-bid conference.

10. The procuring entity is requiring the contractors/bidders for the procurement of the **Upgrading of Electrical System** to be a licensed contractor of the Philippine Contractors Accreditation Board (PCAB)-General Engineering B and General Building – Specialty-Electrical Works – Small B.

An Additional requirement before the sale of bidding document is to secure the Site Inspection Certificate signed by the Principal or School Physical Facilities Coordinator.


11. The **Schools Division Office-Muntinlupa City** reserves the right to reject any and all bids, declare a failure of bidding, or not award the contract at any time prior to contract award in accordance with Sections 35.6 and 41 of the 2016 revised Implementing Rules and Regulations (IRR) of RA No. 9184, without thereby incurring any liability to the affected bidder or bidders.
12. For further information, please refer to:

Ms. Phoebe R. Arroyo
BAC Secretariat-Chair
SDO Muntinlupa City
Centennial Avenue, Laguerta, Tunasan, Muntinlupa City
(02) 8829-2308 loc. 120
sdomuntinlupabacsec@gmail.com

Ms. Lourdes V. Rodilla
BAC Secretariat-Member
SDO Muntinlupa City
Centennial Avenue, Laguerta, Tunasan, Muntinlupa City
(02) 8829-2308 loc. 129
sdomuntinlupabacsec@gmail.com

Mr. Joseph D. Nilo
BAC Secretariat-Member
SDO Muntinlupa City
Centennial Avenue, Laguerta, Tunasan, Muntinlupa City
(02) 8829-2308 loc. 120
sdomuntinlupabacsec@gmail.com

13. You may visit the website: <http://deped-muntinlupa.com> for the downloading of the Bidding Documents.


MADELINE ANN L. DIAZ
BAC Vice Chair
May 8, 2024

Section II. Instructions to Bidders

Notes on the Instructions to Bidders

This Section on the Instruction to Bidders (ITB) provides the information necessary for bidders to prepare responsive bids, in accordance with the requirements of the Procuring Entity. It also provides information on bid submission, eligibility check, opening and evaluation of bids, post-qualification, and on the award of contract.

1. Scope of Bid

The Procuring Entity, **Schools Division Office-Muntinlupa City** invites Bids for the **Upgrading of Electrical System**, with Project Identification Number **Project Number 2024-004**.

2. Funding Information

2.1. The GOP through the source of funding as indicated below based on *DepEd Memorandum from Epimaco V. Densing III, Undersecretary for School Infrastructure and Facilities* with the subject *“Conduct of 2024 Early Procurement Activities (EPA) for the Various Sub-Project Components of the Basic Education Facilities Fund and Last Mile Schools Program”* intends to apply the sum of *Twenty-Two Million Two Hundred Fifty-One Thousand Nine Hundred Seventy Pesos and 63/100 (₱22,251,970.63)*.

2.2. The source of funding is:

- a. **NGA, the National Expenditure Program.**

3. Bidding Requirements

The Bidding for the Project shall be governed by all the provisions of RA No. 9184 and its 2016 revised IRR, including its Generic Procurement Manual and associated policies, rules and regulations as the primary source thereof, while the herein clauses shall serve as the secondary source thereof.

Any amendments made to the IRR and other GPPB issuances shall be applicable only to the ongoing posting, advertisement, or invitation to bid by the BAC through the issuance of a supplemental or bid bulletin.

The Bidder, by the act of submitting its Bid, shall be deemed to have inspected the site, determined the general characteristics of the contracted Works and the conditions for this Project, such as the location and the nature of the work; (b) climatic conditions; (c) transportation facilities; (c) nature and condition of the terrain, geological conditions at the site communication facilities, requirements, location and availability of construction aggregates and other materials, labor, water, electric power and access roads; and (d) other factors that may affect the cost, duration and execution or implementation of the contract, project, or work and examine all instructions, forms, terms, and project requirements in the Bidding Documents.

4. Corrupt, Fraudulent, Collusive, Coercive, and Obstructive Practices

The Procuring Entity, as well as the Bidders and Contractors, shall observe the highest standard of ethics during the procurement and execution of the contract. They or through an agent shall not engage in corrupt, fraudulent, collusive, coercive, and obstructive practices defined under Annex “I” of the 2016 revised IRR of RA No. 9184 or other integrity violations in competing for the Project.

5. Eligible Bidders

- 5.1. Only Bids of Bidders found to be legally, technically, and financially capable will be evaluated.
- 5.2. The Bidder must have an experience of having completed a Single Largest Completed Contract (SLCC) that is similar to this Project, equivalent to at least fifty percent (50%) of the ABC adjusted, if necessary, by the Bidder to current prices using the PSA's CPI, except under conditions provided for in Section 23.4.2.4 of the 2016 revised IRR of RA No. 9184.
- 5.3. The Bidders shall comply with the eligibility criteria under Section 23.4.2 of the 2016 IRR of RA No. 9184.

6. Origin of Associated Goods

There is no restriction on the origin of Goods other than those prohibited by a decision of the UN Security Council taken under Chapter VII of the Charter of the UN.

7. Subcontracts

- a. Subcontracting is not allowed.

8. Pre-Bid Conference

The Procuring Entity will hold a pre-bid conference for this Project on **May 16, 2024, Thursday, 1:30 pm.** via **blended modality (face-to-face and online)**, as indicated in paragraph 6 of the **IB**.

9. Clarification and Amendment of Bidding Documents

Prospective bidders may request for clarification on and/or interpretation of any part of the Bidding Documents. Such requests must be in writing and received by the Procuring Entity, either at its given address or through electronic mail indicated in the **IB**, at least ten (10) calendar days before the deadline set for the submission and receipt of Bids.

10. Documents Comprising the Bid: Eligibility and Technical Components

- 10.1. The first envelope shall contain the eligibility and technical documents of the Bid as specified in **Section IX. Checklist of Technical and Financial Documents**.
- 10.2. If the eligibility requirements or statements, the bids, and all other documents for submission to the BAC are in foreign language other than English, it must be accompanied by a translation in English, which shall be authenticated by the appropriate Philippine foreign service establishment, post, or the equivalent office having jurisdiction over the foreign bidder's affairs in the Philippines.

For Contracting Parties to the Apostille Convention, only the translated documents shall be authenticated through an apostille pursuant to GPPB Resolution No. 13-2019 dated 23 May 2019. The English translation shall govern, for purposes of interpretation of the bid.

- 10.3. A valid special PCAB License in case of Joint Ventures, and registration for the type and cost of the contract for this Project. Any additional type of Contractor license or permit shall be indicated in the **BDS**.
- 10.4. A List of Contractor's key personnel (e.g., Project Manager, Project Engineers, Materials Engineers, and Foremen) assigned to the contract to be bid, with their complete qualification and experience data shall be provided. These key personnel must meet the required minimum years of experience set in the **BDS**.
- 10.5. A List of Contractor's major equipment units, which are owned, leased, and/or under purchase agreements, supported by proof of ownership, certification of availability of equipment from the equipment lessor/vendor for the duration of the project, as the case may be, must meet the minimum requirements for the contract set in the **BDS**.

11. Documents Comprising the Bid: Financial Component

- 11.1. The second bid envelope shall contain the financial documents for the Bid as specified in **Section IX. Checklist of Technical and Financial Documents**.
- 11.2. Any bid exceeding the ABC indicated in paragraph 1 of the **IB** shall not be accepted.
- 11.3. For Foreign-funded procurement, a ceiling may be applied to bid prices provided the conditions are met under Section 31.2 of the 2016 revised IRR of RA No. 9184.

12. Alternative Bids

Bidders shall submit offers that comply with the requirements of the Bidding Documents, including the basic technical design as indicated in the drawings and specifications. Unless there is a value engineering clause in the **BDS**, alternative Bids shall not be accepted.

13. Bid Prices

All bid prices for the given scope of work in the Project as awarded shall be considered as fixed prices, and therefore not subject to price escalation during contract implementation, except under extraordinary circumstances as determined by the NEDA and approved by the GPPB pursuant to the revised Guidelines for Contract Price Escalation guidelines.

14. Bid and Payment Currencies

14.1. *Payment of the contract price shall be made in Philippine Pesos.*

15. Bid Security

15.1. The Bidder shall submit a Bid Securing Declaration or any form of Bid Security in the amount indicated in the **BDS**, which shall be not less than the percentage of the ABC in accordance with the schedule in the **BDS**.

15.2. The Bid and bid security shall be valid until **December 31, 2024**. Any bid not accompanied by an acceptable bid security shall be rejected by the Procuring Entity as non-responsive.

16. Sealing and Marking of Bids

Each Bidder shall submit one copy of the first and second components of its Bid.

The Procuring Entity may request additional hard copies and/or electronic copies of the Bid. However, failure of the Bidders to comply with the said request shall not be a ground for disqualification.

17. Deadline for Submission of Bids

The Bidders shall submit on the specified date and time and either at its physical address or through any courier submission as indicated in paragraph 7 of the **IB**.

18. Opening and Preliminary Examination of Bids

18.1. The BAC shall open the Bids in public at the time, on the date, and at the place specified in paragraph 9 of the **IB**. The Bidders' representatives who are present shall sign a register evidencing their attendance. In case videoconferencing, webcasting or other similar technologies will be used, attendance of participants shall likewise be recorded by the BAC Secretariat.

In case the Bids cannot be opened as scheduled due to justifiable reasons, the rescheduling requirements under Section 29 of the 2016 revised IRR of RA No. 9184 shall prevail.

18.2. The preliminary examination of Bids shall be governed by Section 30 of the 2016 revised IRR of RA No. 9184.

19. Detailed Evaluation and Comparison of Bids

19.1. The Procuring Entity's BAC shall immediately conduct a detailed evaluation of all Bids rated "*passed*" using non-discretionary pass/fail criteria. The BAC shall consider the conditions in the evaluation of Bids under Section 32.2 of 2016 revised IRR of RA No. 9184.

- 19.2. If the Project allows partial bids, all Bids and combinations of Bids as indicated in the **BDS** shall be received by the same deadline and opened and evaluated simultaneously so as to determine the Bid or combination of Bids offering the lowest calculated cost to the Procuring Entity. Bid Security as required by **ITB** Clause 15 shall be submitted for each contract (lot) separately.
- 19.3. In all cases, the NFCC computation pursuant to Section 23.4.2.6 of the 2016 revised IRR of RA No. 9184 must be sufficient for the total of the ABCs for all the lots participated in by the prospective Bidder.

20. Post Qualification

Within a non-extendible period of five (5) calendar days from receipt by the Bidder of the notice from the BAC that it submitted the Lowest Calculated Bid, the Bidder shall submit its latest income and business tax returns filed and paid through the BIR Electronic Filing and Payment System (eFPS), and other appropriate licenses and permits required by law and stated in the **BDS**.

21. Signing of the Contract

The documents required in Section 37.2 of the 2016 revised IRR of RA No. 9184 shall form part of the Contract. Additional Contract documents are indicated in the **BDS**.

Section III. Bid Data Sheet

Notes on the Bid Data Sheet (BDS)

The Bid Data Sheet (BDS) consists of provisions that supplement, amend, or specify in detail, information, or requirements included in the ITB found in Section II, which are specific to each procurement.

This Section is intended to assist the Procuring Entity in providing the specific information in relation to corresponding clauses in the ITB and has to be prepared for each specific procurement.

The Procuring Entity should specify in the BDS information and requirements specific to the circumstances of the Procuring Entity, the processing of the procurement, and the bid evaluation criteria that will apply to the Bids. In preparing the BDS, the following aspects should be checked:

- a. Information that specifies and complements provisions of the ITB must be incorporated.
- b. Amendments and/or supplements, if any, to provisions of the ITB as necessitated by the circumstances of the specific procurement, must also be incorporated.

Bid Data Sheet

ITB Clause																												
5.2	<p>For this purpose, contracts similar to the Project refer to contracts which have the same major categories of work, which shall be:</p> <p>Upgrading of Electrical System of Various School Buildings and must hold a certification of Installation of Transformers and Metering Devices from any Electric Cooperative</p>																											
7.1	<p><i>Subcontracting is not allowed.</i> <i>Ref: Sec II ITB Article 7a</i></p>																											
10.3	<p>Philippine Contractors Accreditation Board (PCAB) License General Engineering B General Building – Specialty-Electrical Works – Small B</p>																											
10.4	<p>The key personnel must meet the required minimum years of experience set below:</p> <table border="1" style="width: 100%; border-collapse: collapse;"> <thead> <tr> <th style="text-align: left;"><u>Key Personnel</u></th> <th style="text-align: center;"><u>General Experience</u></th> <th style="text-align: center;"><u>Relevant Experience</u></th> </tr> </thead> <tbody> <tr> <td>Manager</td> <td style="text-align: center;">20 yrs</td> <td style="text-align: center;">15 yrs</td> </tr> <tr> <td>Professional EE</td> <td style="text-align: center;">20 yrs</td> <td style="text-align: center;">15 yrs</td> </tr> <tr> <td>Registered EE</td> <td style="text-align: center;">10 yrs</td> <td style="text-align: center;">5 yrs</td> </tr> <tr> <td>Safety Officer</td> <td style="text-align: center;">5 yrs</td> <td style="text-align: center;">2 yrs</td> </tr> <tr> <td>Reg. Master Electrician</td> <td style="text-align: center;">5 yrs</td> <td style="text-align: center;">5 yrs</td> </tr> <tr> <td>Foreman</td> <td style="text-align: center;">5 yrs</td> <td style="text-align: center;">5 yrs</td> </tr> <tr> <td>Mason</td> <td style="text-align: center;">5 yrs</td> <td style="text-align: center;">3 yrs</td> </tr> </tbody> </table>	<u>Key Personnel</u>	<u>General Experience</u>	<u>Relevant Experience</u>	Manager	20 yrs	15 yrs	Professional EE	20 yrs	15 yrs	Registered EE	10 yrs	5 yrs	Safety Officer	5 yrs	2 yrs	Reg. Master Electrician	5 yrs	5 yrs	Foreman	5 yrs	5 yrs	Mason	5 yrs	3 yrs			
<u>Key Personnel</u>	<u>General Experience</u>	<u>Relevant Experience</u>																										
Manager	20 yrs	15 yrs																										
Professional EE	20 yrs	15 yrs																										
Registered EE	10 yrs	5 yrs																										
Safety Officer	5 yrs	2 yrs																										
Reg. Master Electrician	5 yrs	5 yrs																										
Foreman	5 yrs	5 yrs																										
Mason	5 yrs	3 yrs																										
10.5	<p>The minimum major equipment requirements are the following:</p> <table border="1" style="width: 100%; border-collapse: collapse;"> <thead> <tr> <th style="text-align: left;"><u>Equipment</u></th> <th style="text-align: center;"><u>Capacity</u></th> <th style="text-align: center;"><u>Number of Units</u></th> </tr> </thead> <tbody> <tr> <td>Hole Digger</td> <td style="text-align: center;">standard</td> <td style="text-align: center;">1 unit</td> </tr> <tr> <td>Concrete mixer</td> <td style="text-align: center;">1 bagger</td> <td style="text-align: center;">1 unit</td> </tr> <tr> <td>Boom truck</td> <td style="text-align: center;">3,500 kg</td> <td style="text-align: center;">1 unit</td> </tr> <tr> <td>Self-loading truck</td> <td style="text-align: center;">12,750 kg</td> <td style="text-align: center;">1 unit</td> </tr> <tr> <td>Hand tools</td> <td style="text-align: center;">standard</td> <td style="text-align: center;">Lot</td> </tr> <tr> <td>Power tools</td> <td style="text-align: center;">Standard</td> <td style="text-align: center;">Lot</td> </tr> <tr> <td>Generator Set</td> <td style="text-align: center;">Standard</td> <td style="text-align: center;">1 unit</td> </tr> <tr> <td>Welding Machine</td> <td style="text-align: center;">Standard</td> <td style="text-align: center;">1 unit</td> </tr> </tbody> </table>	<u>Equipment</u>	<u>Capacity</u>	<u>Number of Units</u>	Hole Digger	standard	1 unit	Concrete mixer	1 bagger	1 unit	Boom truck	3,500 kg	1 unit	Self-loading truck	12,750 kg	1 unit	Hand tools	standard	Lot	Power tools	Standard	Lot	Generator Set	Standard	1 unit	Welding Machine	Standard	1 unit
<u>Equipment</u>	<u>Capacity</u>	<u>Number of Units</u>																										
Hole Digger	standard	1 unit																										
Concrete mixer	1 bagger	1 unit																										
Boom truck	3,500 kg	1 unit																										
Self-loading truck	12,750 kg	1 unit																										
Hand tools	standard	Lot																										
Power tools	Standard	Lot																										
Generator Set	Standard	1 unit																										
Welding Machine	Standard	1 unit																										
15.1	<p>The bid security shall be in the form of a Bid Securing Declaration or any of the following forms and amounts:</p> <p>a. The amount of not less than PhP445,039.41 (2%) of ABC, if bid security is in cash, cashier's/manager's check, bank draft/guarantee or irrevocable letter of credit;</p>																											

	b. The amount of not less than PhP1,112,598.53 (5%) of ABC if bid security is in Surety Bond.
21	Additional contract documents relevant to the Project that may be required by existing laws and/or the Procuring Entity, such as construction schedule and S-curve, manpower schedule, construction methods, equipment utilization schedule, construction safety and health program approved by the DOLE, and other acceptable tools of project scheduling.

Section IV. General Conditions of Contract

Notes on the General Conditions of Contract

The General Conditions of Contract (GCC) in this Section, read in conjunction with the Special Conditions of Contract in Section V and other documents listed therein, should be a complete document expressing all the rights and obligations of the parties.

Matters governing performance of the Contractor, payments under the contract, or matters affecting the risks, rights, and obligations of the parties under the contract are included in the GCC and Special Conditions of Contract.

Any complementary information, which may be needed, shall be introduced only through the Special Conditions of Contract.

1. **Scope of Contract**

This Contract shall include all such items, although not specifically mentioned, that can be reasonably inferred as being required for its completion as if such items were expressly mentioned herein. All the provisions of RA No. 9184 and its 2016 revised IRR, including the Generic Procurement Manual, and associated issuances, constitute the primary source for the terms and conditions of the Contract, and thus, applicable in contract implementation. Herein clauses shall serve as the secondary source for the terms and conditions of the Contract.

This is without prejudice to Sections 74.1 and 74.2 of the 2016 revised IRR of RA No. 9184 allowing the GPPB to amend the IRR, which shall be applied to all procurement activities, the advertisement, posting, or invitation of which were issued after the effectivity of the said amendment.

2. **Sectional Completion of Works**

If sectional completion is specified in the **Special Conditions of Contract (SCC)**, references in the Conditions of Contract to the Works, the Completion Date, and the Intended Completion Date shall apply to any Section of the Works (other than references to the Completion Date and Intended Completion Date for the whole of the Works).

3. **Possession of Site**

3.1 The Procuring Entity shall give possession of all or parts of the Site to the Contractor based on the schedule of delivery indicated in the **SCC**, which corresponds to the execution of the Works. If the Contractor suffers delay or incurs cost from failure on the part of the Procuring Entity to give possession in accordance with the terms of this clause, the Procuring Entity's Representative shall give the Contractor a Contract Time Extension and certify such sum as fair to cover the cost incurred, which sum shall be paid by Procuring Entity.

3.2 If possession of a portion is not given by the above date, the Procuring Entity will be deemed to have delayed the start of the relevant activities. The resulting adjustments in contract time to address such delay may be addressed through contract extension provided under Annex "E" of the 2016 revised IRR of RA No. 9184.

4. **The Contractor's Obligations**

The Contractor shall employ the key personnel named in the Schedule of Key Personnel indicating their designation, in accordance with **ITB** Clause 10.3 and specified in the **BDS**, to carry out the supervision of the Works.

The Procuring Entity will approve any proposed replacement of key personnel only if their relevant qualifications and abilities are equal to or better than those of the personnel listed in the Schedule.

5. Performance Security

- 5.1. Within ten (10) calendar days from receipt of the Notice of Award from the Procuring Entity but in no case later than the signing of the contract by both parties, the successful Bidder shall furnish the performance security in any of the forms prescribed in Section 39 of the 2016 revised IRR.
- 5.2. The Contractor, by entering into the Contract with the Procuring Entity, acknowledges the right of the Procuring Entity to institute action pursuant to RA No. 3688 against any subcontractor be they an individual, firm, partnership, corporation, or association supplying the Contractor with labor, materials and/or equipment for the performance of this Contract.

6. Site Investigation Reports

The Contractor, in preparing the Bid, shall rely on any Site Investigation Reports referred to in the SCC supplemented by any information obtained by the Contractor.

7. Warranty

- 7.1. In case the Contractor fails to undertake the repair works under Section 62.2.2 of the 2016 revised IRR, the Procuring Entity shall forfeit its performance security, subject its property(ies) to attachment or garnishment proceedings, and perpetually disqualify it from participating in any public bidding. All payables of the GOP in his favor shall be offset to recover the costs.
- 7.2. The warranty against Structural Defects/Failures, except that occasioned-on force majeure, shall cover the period from the date of issuance of the Certificate of Final Acceptance by the Procuring Entity. Specific duration of the warranty is found in the SCC.

8. Liability of the Contractor

Subject to additional provisions, if any, set forth in the SCC, the Contractor's liability under this Contract shall be as provided by the laws of the Republic of the Philippines.

If the Contractor is a joint venture, all partners to the joint venture shall be jointly and severally liable to the Procuring Entity.

9. Termination for Other Causes

Contract termination shall be initiated in case it is determined *prima facie* by the Procuring Entity that the Contractor has engaged, before, or during the implementation of the contract, in unlawful deeds and behaviors relative to contract acquisition and implementation, such as, but not limited to corrupt, fraudulent, collusive, coercive, and obstructive practices as stated in **ITB** Clause 4.

10. Dayworks

Subject to the guidelines on Variation Order in Annex “E” of the 2016 revised IRR of RA No. 9184, and if applicable as indicated in the **SCC**, the Dayworks rates in the Contractor’s Bid shall be used for small additional amounts of work only when the Procuring Entity’s Representative has given written instructions in advance for additional work to be paid for in that way.

11. Program of Work

11.1. The Contractor shall submit to the Procuring Entity’s Representative for approval the said Program of Work showing the general methods, arrangements, order, and timing for all the activities in the Works. The submissions of the Program of Work are indicated in the **SCC**.

11.2. The Contractor shall submit to the Procuring Entity’s Representative for approval an updated Program of Work at intervals no longer than the period stated in the **SCC**. If the Contractor does not submit an updated Program of Work within this period, the Procuring Entity’s Representative may withhold the amount stated in the **SCC** from the next payment certificate and continue to withhold this amount until the next payment after the date on which the overdue Program of Work has been submitted.

12. Instructions, Inspections and Audits

The Contractor shall permit the GOP or the Procuring Entity to inspect the Contractor’s accounts and records relating to the performance of the Contractor and to have them audited by auditors of the GOP or the Procuring Entity, as may be required.

13. Advance Payment

The Procuring Entity shall, upon a written request of the Contractor which shall be submitted as a Contract document, make an advance payment to the Contractor in an amount not exceeding fifteen percent (15%) of the total contract price, to be made in lump sum, or at the most two installments according to a schedule specified in the **SCC**, subject to the requirements in Annex “E” of the 2016 revised IRR of RA No. 9184.

14. Progress Payments

The Contractor may submit a request for payment for Work accomplished. Such requests for payment shall be verified and certified by the Procuring Entity’s Representative/Project Engineer. Except as otherwise stipulated in the **SCC**, materials and equipment delivered on the site but not completely put in place shall not be included for payment.

15. Operating and Maintenance Manuals

15.1. If required, the Contractor will provide “as built” Drawings and/or operating and maintenance manuals as specified in the **SCC**.

- 15.2. If the Contractor does not provide the Drawings and/or manuals by the dates stated above, or they do not receive the Procuring Entity's Representative's approval, the Procuring Entity's Representative may withhold the amount stated in the SCC from payments due to the Contractor.

Section V. Special Conditions of Contract

Notes on the Special Conditions of Contract

Similar to the BDS, the clauses in this Section are intended to assist the Procuring Entity in providing contract-specific information in relation to corresponding clauses in the GCC found in Section IV.

The Special Conditions of Contract (SCC) complement the GCC, specifying contractual requirements linked to the special circumstances of the Procuring Entity, the Procuring Entity's country, the sector, and the Works procured. In preparing this Section, the following aspects should be checked:

- a. Information that complements provisions of the GCC must be incorporated.
- b. Amendments and/or supplements to provisions of the GCC as necessitated by the circumstances of the specific purchase, must also be incorporated.

However, no special condition which defeats or negates the general intent and purpose of the provisions of the GCC should be incorporated herein.

Special Conditions of Contract

GCC Clause	
2	The Completion Date and Intended Completion Date for the whole of the works is 185 calendar days from receipt of NTP
4.1	No further instruction.
6	Site Inspection Certificate is required. The site is located at NBP Reservation, Poblacion, Muntinlupa City
7.2	<i>In case of permanent structures, such as buildings of types 4 and 5 as classified under the National Building Code of the Philippines and other structures made of steel, iron, or concrete which comply with relevant structural codes (e.g., DPWH Standard Specifications), such as, but not limited to, steel/concrete bridges, flyovers, aircraft movement areas, ports, dams, tunnels, filtration and treatment plants, sewerage systems, power plants, transmission and communication towers, railway system, and other similar permanent structures</i> Fifteen (15) years
10	Dayworks are applicable at the rate shown in the Contractor's original Bid.
11.1	Not Applicable
11.2	Not Applicable
13	The amount of the advance payment is not exceeding 15% of the total contract price and in two installments.
14	Not Allowed
15.1	The date by which "as built" drawing are required upon the completion of the project.
15.2	The amount to be withheld for failing to produce "as built" drawings by the date required is equivalent to the final progress billing.

Section VI. Specifications

Notes on Specifications

A set of precise and clear specifications is a prerequisite for Bidders to respond realistically and competitively to the requirements of the Procuring Entity without qualifying or conditioning their Bids. In the context of international competitive bidding, the specifications must be drafted to permit the widest possible competition and, at the same time, present a clear statement of the required standards of workmanship, materials, and performance of the goods and services to be procured. Only if this is done will the objectives of economy, efficiency, and fairness in procurement be realized, responsiveness of Bids be ensured, and the subsequent task of bid evaluation facilitated. The specifications should require that all goods and materials to be incorporated in the Works be new, unused, of the most recent or current models, and incorporate all recent improvements in design and materials unless provided otherwise in the Contract.

Samples of specifications from previous similar projects are useful in this respect. The use of metric units is mandatory. Most specifications are normally written specially by the Procuring Entity or its representative to suit the Works at hand. There is no standard set of Specifications for universal application in all sectors in all regions, but there are established principles and practices, which are reflected in these PBDs.

There are considerable advantages in standardizing General Specifications for repetitive Works in recognized public sectors, such as highways, ports, railways, urban housing, irrigation, and water supply, in the same country or region where similar conditions prevail. The General Specifications should cover all classes of workmanship, materials, and equipment commonly involved in construction, although not necessarily to be used in a particular Works Contract. Deletions or addenda should then adapt the General Specifications to the particular Works.

Care must be taken in drafting specifications to ensure that they are not restrictive. In the specification of standards for goods, materials, and workmanship, recognized international standards should be used as much as possible. Where other particular standards are used, whether national standards or other standards, the specifications should state that goods, materials, and workmanship that meet other authoritative standards, and which ensure substantially equal or higher quality than the standards mentioned, will also be acceptable. The following clause may be inserted in the SCC.

Sample Clause: Equivalency of Standards and Codes

Wherever reference is made in the Contract to specific standards and codes to be met by the goods and materials to be furnished, and work performed or tested, the provisions of the latest current edition or revision of the relevant standards and codes in effect shall apply, unless otherwise expressly stated in the Contract. Where such standards and codes are national, or relate to a particular country or region, other authoritative standards that ensure a substantially equal or higher quality than the standards and codes specified will be accepted

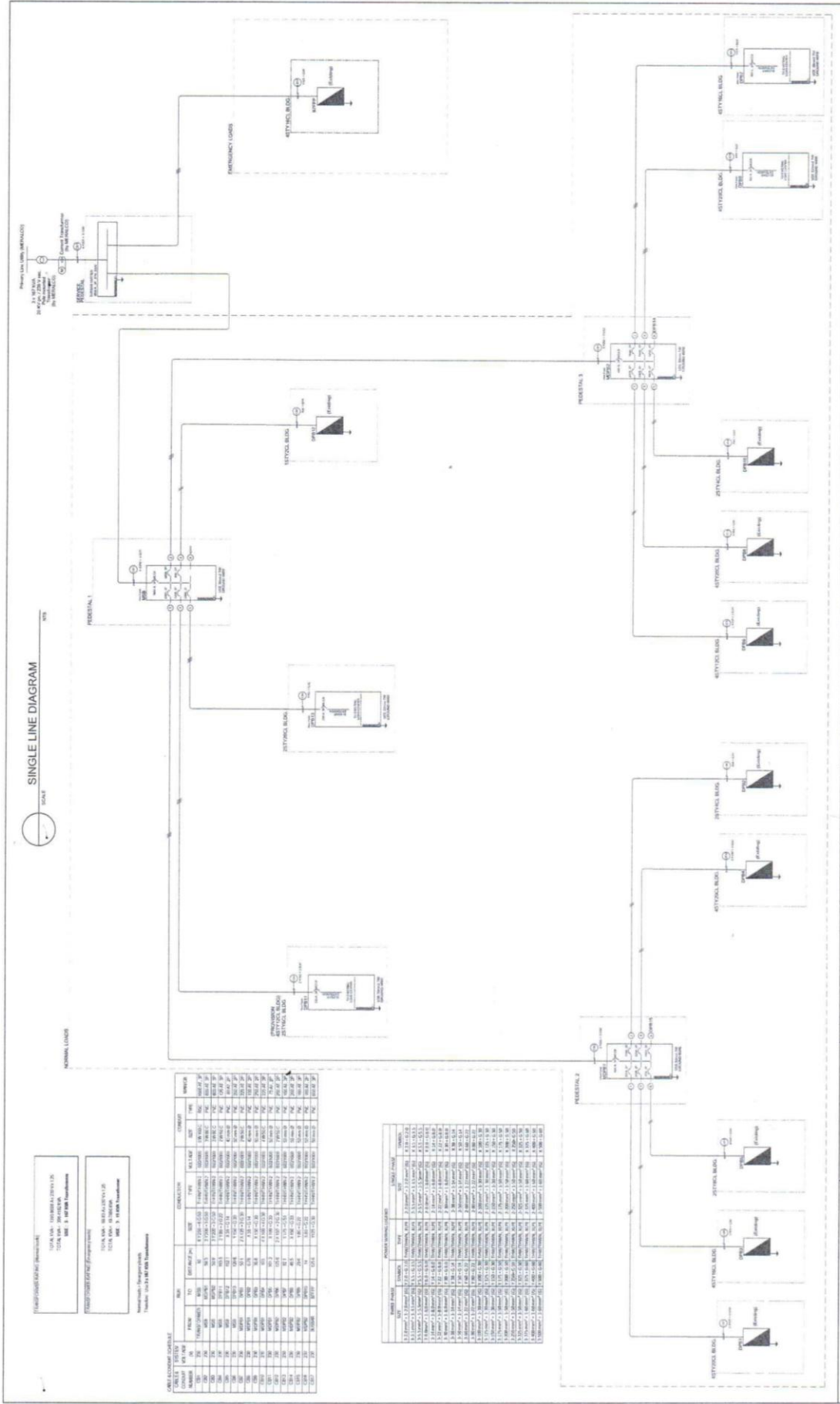
subject to the Procuring Entity's Representative's prior review and written consent. Differences between the standards specified and the proposed alternative standards shall be fully described in writing by the Contractor and submitted to the Procuring Entity's Representative at least twenty-eight (28) days prior to the date when the Contractor desires the Procuring Entity's Representative's consent. In the event the Procuring Entity's Representative determines that such proposed deviations do not ensure substantially equal or higher quality, the Contractor shall comply with the standards specified in the documents.

These notes are intended only as information for the Procuring Entity or the person drafting the Bidding Documents. They should not be included in the final Bidding Documents.

Notes: See the General Notes in the Site Electrical Layout

Section VII. Drawings





SINGLE LINE DIAGRAM



ABLES EQUIPMENT CAPACITIES

ITEM NO.	DESCRIPTION	CAPACITY	UNIT
1	3000 KVA Transformer	3000	KVA
2	400V Busbar	400	V
3	400V Breaker	400	A
4	400V Feeder	400	V
5	Emergency Load	1000	KVA
6	General Load	2000	KVA
7	Emergency Load	1000	KVA
8	General Load	2000	KVA
9	Emergency Load	1000	KVA
10	General Load	2000	KVA
11	Emergency Load	1000	KVA
12	General Load	2000	KVA
13	Emergency Load	1000	KVA
14	General Load	2000	KVA
15	Emergency Load	1000	KVA
16	General Load	2000	KVA
17	Emergency Load	1000	KVA
18	General Load	2000	KVA
19	Emergency Load	1000	KVA
20	General Load	2000	KVA
21	Emergency Load	1000	KVA
22	General Load	2000	KVA
23	Emergency Load	1000	KVA
24	General Load	2000	KVA
25	Emergency Load	1000	KVA
26	General Load	2000	KVA
27	Emergency Load	1000	KVA
28	General Load	2000	KVA
29	Emergency Load	1000	KVA
30	General Load	2000	KVA

PROPOSED EQUIPMENT CAPACITIES

ITEM NO.	DESCRIPTION	CAPACITY	UNIT
31	3000 KVA Transformer	3000	KVA
32	400V Busbar	400	V
33	400V Breaker	400	A
34	400V Feeder	400	V
35	Emergency Load	1000	KVA
36	General Load	2000	KVA
37	Emergency Load	1000	KVA
38	General Load	2000	KVA
39	Emergency Load	1000	KVA
40	General Load	2000	KVA
41	Emergency Load	1000	KVA
42	General Load	2000	KVA
43	Emergency Load	1000	KVA
44	General Load	2000	KVA
45	Emergency Load	1000	KVA
46	General Load	2000	KVA
47	Emergency Load	1000	KVA
48	General Load	2000	KVA
49	Emergency Load	1000	KVA
50	General Load	2000	KVA

PROJECT TITLE: MUNTINLUPA NATIONAL HIGH SCHOOL (JUNIOR HIGH SCHOOL) ELECTRICAL PLAN

PROJECT CODE: DEPARTMENT OF EDUCATION DepEd AS SHOWN

APPROVED BY: MA REGALITA A. OLARTE, Vice-Principal, Division Office - Cagayan de Oro City

APPROVED BY: VIOLETA M. GONZALES, Assistant Schools Division Superintendent

DESIGNED BY: [Signature]

PROFESSIONAL ENGINEER REG. NO. []

SCALE: []

PROJECT NO: E-2

SHEET NO: 5

TABLE I SCHEDULE OF LOADS		TABLE II SCHEDULE OF LOADS		TABLE III SCHEDULE OF LOADS		TABLE IV SCHEDULE OF LOADS		TABLE V SCHEDULE OF LOADS		TABLE VI SCHEDULE OF LOADS		TABLE VII SCHEDULE OF LOADS		TABLE VIII SCHEDULE OF LOADS			
Room No.	Description of Loads	Room No.	Description of Loads	Room No.	Description of Loads	Room No.	Description of Loads	Room No.	Description of Loads	Room No.	Description of Loads	Room No.	Description of Loads	Room No.	Description of Loads		
101	Office	102	Office	103	Office	104	Office	105	Office	106	Office	107	Office	108	Office	109	Office
110	Office	111	Office	112	Office	113	Office	114	Office	115	Office	116	Office	117	Office	118	Office
119	Office	120	Office	121	Office	122	Office	123	Office	124	Office	125	Office	126	Office	127	Office
128	Office	129	Office	130	Office	131	Office	132	Office	133	Office	134	Office	135	Office	136	Office
137	Office	138	Office	139	Office	140	Office	141	Office	142	Office	143	Office	144	Office	145	Office
146	Office	147	Office	148	Office	149	Office	150	Office	151	Office	152	Office	153	Office	154	Office
155	Office	156	Office	157	Office	158	Office	159	Office	160	Office	161	Office	162	Office	163	Office
164	Office	165	Office	166	Office	167	Office	168	Office	169	Office	170	Office	171	Office	172	Office
173	Office	174	Office	175	Office	176	Office	177	Office	178	Office	179	Office	180	Office	181	Office
182	Office	183	Office	184	Office	185	Office	186	Office	187	Office	188	Office	189	Office	190	Office
191	Office	192	Office	193	Office	194	Office	195	Office	196	Office	197	Office	198	Office	199	Office
200	Office	201	Office	202	Office	203	Office	204	Office	205	Office	206	Office	207	Office	208	Office
209	Office	210	Office	211	Office	212	Office	213	Office	214	Office	215	Office	216	Office	217	Office
218	Office	219	Office	220	Office	221	Office	222	Office	223	Office	224	Office	225	Office	226	Office
227	Office	228	Office	229	Office	230	Office	231	Office	232	Office	233	Office	234	Office	235	Office
236	Office	237	Office	238	Office	239	Office	240	Office	241	Office	242	Office	243	Office	244	Office
245	Office	246	Office	247	Office	248	Office	249	Office	250	Office	251	Office	252	Office	253	Office
254	Office	255	Office	256	Office	257	Office	258	Office	259	Office	260	Office	261	Office	262	Office
263	Office	264	Office	265	Office	266	Office	267	Office	268	Office	269	Office	270	Office	271	Office
272	Office	273	Office	274	Office	275	Office	276	Office	277	Office	278	Office	279	Office	280	Office
281	Office	282	Office	283	Office	284	Office	285	Office	286	Office	287	Office	288	Office	289	Office
290	Office	291	Office	292	Office	293	Office	294	Office	295	Office	296	Office	297	Office	298	Office
299	Office	300	Office	301	Office	302	Office	303	Office	304	Office	305	Office	306	Office	307	Office
308	Office	309	Office	310	Office	311	Office	312	Office	313	Office	314	Office	315	Office	316	Office
317	Office	318	Office	319	Office	320	Office	321	Office	322	Office	323	Office	324	Office	325	Office
326	Office	327	Office	328	Office	329	Office	330	Office	331	Office	332	Office	333	Office	334	Office
335	Office	336	Office	337	Office	338	Office	339	Office	340	Office	341	Office	342	Office	343	Office
344	Office	345	Office	346	Office	347	Office	348	Office	349	Office	350	Office	351	Office	352	Office
353	Office	354	Office	355	Office	356	Office	357	Office	358	Office	359	Office	360	Office	361	Office
362	Office	363	Office	364	Office	365	Office	366	Office	367	Office	368	Office	369	Office	370	Office
371	Office	372	Office	373	Office	374	Office	375	Office	376	Office	377	Office	378	Office	379	Office
380	Office	381	Office	382	Office	383	Office	384	Office	385	Office	386	Office	387	Office	388	Office
389	Office	390	Office	391	Office	392	Office	393	Office	394	Office	395	Office	396	Office	397	Office
398	Office	399	Office	400	Office	401	Office	402	Office	403	Office	404	Office	405	Office	406	Office


 DEPARTMENT OF EDUCATION
 Divided
 AS SHOWN
 SHEET NO. **E-4**
5

PROJECT TITLE
**MINTINLUPA NATIONAL HIGH SCHOOL (JUNIOR HIGH SCHOOL)
 ELECTRICAL PLAN
 MINTINLUPA, CITY**

APPROVED BY:

VIOLETA M. GONZALES
 Assistant School Division Superintendent
 Division Office - Marikina City

RECOMMENDING APPROVAL
 REGISTERED ELECTRICAL ENGINEER

MA. REGALE A. DE ARCE
 Registered Electrical Engineer
 OIC-Chief **860**

CHECKED BY:
 REGISTERED ELECTRICAL ENGINEER

 M. S. S. S.
 REGISTERED ELECTRICAL ENGINEER

DRAWN BY:

 M. S. S. S.
 ELECTRICAL ENGINEER

DIVISION OFFICE - MARIKINA CITY

DepEd
 DIVISION OFFICE - MARIKINA CITY



SCHEDULE OF LOWVOLT	
1. 15 AMP 120V SINGLE PHASE	1. 15 AMP 120V SINGLE PHASE
2. 20 AMP 120V SINGLE PHASE	2. 20 AMP 120V SINGLE PHASE
3. 30 AMP 120V SINGLE PHASE	3. 30 AMP 120V SINGLE PHASE
4. 40 AMP 120V SINGLE PHASE	4. 40 AMP 120V SINGLE PHASE
5. 50 AMP 120V SINGLE PHASE	5. 50 AMP 120V SINGLE PHASE
6. 60 AMP 120V SINGLE PHASE	6. 60 AMP 120V SINGLE PHASE
7. 75 AMP 120V SINGLE PHASE	7. 75 AMP 120V SINGLE PHASE
8. 100 AMP 120V SINGLE PHASE	8. 100 AMP 120V SINGLE PHASE
9. 150 AMP 120V SINGLE PHASE	9. 150 AMP 120V SINGLE PHASE
10. 200 AMP 120V SINGLE PHASE	10. 200 AMP 120V SINGLE PHASE
11. 250 AMP 120V SINGLE PHASE	11. 250 AMP 120V SINGLE PHASE
12. 300 AMP 120V SINGLE PHASE	12. 300 AMP 120V SINGLE PHASE
13. 350 AMP 120V SINGLE PHASE	13. 350 AMP 120V SINGLE PHASE
14. 400 AMP 120V SINGLE PHASE	14. 400 AMP 120V SINGLE PHASE
15. 450 AMP 120V SINGLE PHASE	15. 450 AMP 120V SINGLE PHASE
16. 500 AMP 120V SINGLE PHASE	16. 500 AMP 120V SINGLE PHASE
17. 600 AMP 120V SINGLE PHASE	17. 600 AMP 120V SINGLE PHASE
18. 700 AMP 120V SINGLE PHASE	18. 700 AMP 120V SINGLE PHASE
19. 800 AMP 120V SINGLE PHASE	19. 800 AMP 120V SINGLE PHASE
20. 900 AMP 120V SINGLE PHASE	20. 900 AMP 120V SINGLE PHASE
21. 1000 AMP 120V SINGLE PHASE	21. 1000 AMP 120V SINGLE PHASE
22. 1500 AMP 120V SINGLE PHASE	22. 1500 AMP 120V SINGLE PHASE
23. 2000 AMP 120V SINGLE PHASE	23. 2000 AMP 120V SINGLE PHASE
24. 2500 AMP 120V SINGLE PHASE	24. 2500 AMP 120V SINGLE PHASE
25. 3000 AMP 120V SINGLE PHASE	25. 3000 AMP 120V SINGLE PHASE
26. 3500 AMP 120V SINGLE PHASE	26. 3500 AMP 120V SINGLE PHASE
27. 4000 AMP 120V SINGLE PHASE	27. 4000 AMP 120V SINGLE PHASE
28. 4500 AMP 120V SINGLE PHASE	28. 4500 AMP 120V SINGLE PHASE
29. 5000 AMP 120V SINGLE PHASE	29. 5000 AMP 120V SINGLE PHASE
30. 6000 AMP 120V SINGLE PHASE	30. 6000 AMP 120V SINGLE PHASE
31. 7000 AMP 120V SINGLE PHASE	31. 7000 AMP 120V SINGLE PHASE
32. 8000 AMP 120V SINGLE PHASE	32. 8000 AMP 120V SINGLE PHASE
33. 9000 AMP 120V SINGLE PHASE	33. 9000 AMP 120V SINGLE PHASE
34. 10000 AMP 120V SINGLE PHASE	34. 10000 AMP 120V SINGLE PHASE
35. 15000 AMP 120V SINGLE PHASE	35. 15000 AMP 120V SINGLE PHASE
36. 20000 AMP 120V SINGLE PHASE	36. 20000 AMP 120V SINGLE PHASE
37. 25000 AMP 120V SINGLE PHASE	37. 25000 AMP 120V SINGLE PHASE
38. 30000 AMP 120V SINGLE PHASE	38. 30000 AMP 120V SINGLE PHASE
39. 35000 AMP 120V SINGLE PHASE	39. 35000 AMP 120V SINGLE PHASE
40. 40000 AMP 120V SINGLE PHASE	40. 40000 AMP 120V SINGLE PHASE
41. 45000 AMP 120V SINGLE PHASE	41. 45000 AMP 120V SINGLE PHASE
42. 50000 AMP 120V SINGLE PHASE	42. 50000 AMP 120V SINGLE PHASE
43. 60000 AMP 120V SINGLE PHASE	43. 60000 AMP 120V SINGLE PHASE
44. 70000 AMP 120V SINGLE PHASE	44. 70000 AMP 120V SINGLE PHASE
45. 80000 AMP 120V SINGLE PHASE	45. 80000 AMP 120V SINGLE PHASE
46. 90000 AMP 120V SINGLE PHASE	46. 90000 AMP 120V SINGLE PHASE
47. 100000 AMP 120V SINGLE PHASE	47. 100000 AMP 120V SINGLE PHASE
48. 150000 AMP 120V SINGLE PHASE	48. 150000 AMP 120V SINGLE PHASE
49. 200000 AMP 120V SINGLE PHASE	49. 200000 AMP 120V SINGLE PHASE
50. 250000 AMP 120V SINGLE PHASE	50. 250000 AMP 120V SINGLE PHASE
51. 300000 AMP 120V SINGLE PHASE	51. 300000 AMP 120V SINGLE PHASE
52. 350000 AMP 120V SINGLE PHASE	52. 350000 AMP 120V SINGLE PHASE
53. 400000 AMP 120V SINGLE PHASE	53. 400000 AMP 120V SINGLE PHASE
54. 450000 AMP 120V SINGLE PHASE	54. 450000 AMP 120V SINGLE PHASE
55. 500000 AMP 120V SINGLE PHASE	55. 500000 AMP 120V SINGLE PHASE
56. 600000 AMP 120V SINGLE PHASE	56. 600000 AMP 120V SINGLE PHASE
57. 700000 AMP 120V SINGLE PHASE	57. 700000 AMP 120V SINGLE PHASE
58. 800000 AMP 120V SINGLE PHASE	58. 800000 AMP 120V SINGLE PHASE
59. 900000 AMP 120V SINGLE PHASE	59. 900000 AMP 120V SINGLE PHASE
60. 1000000 AMP 120V SINGLE PHASE	60. 1000000 AMP 120V SINGLE PHASE

OWNER: DEPARTMENT OF EDUCATION
 SHEET NUMBER: E-5
 AS SHOWN

PROJECT ONE: MINTINLUPA NATIONAL HIGH SCHOOL (JUNIOR HIGH SCHOOL)
 ELECTRICAL PLAN
 MINTINLUPA CITY

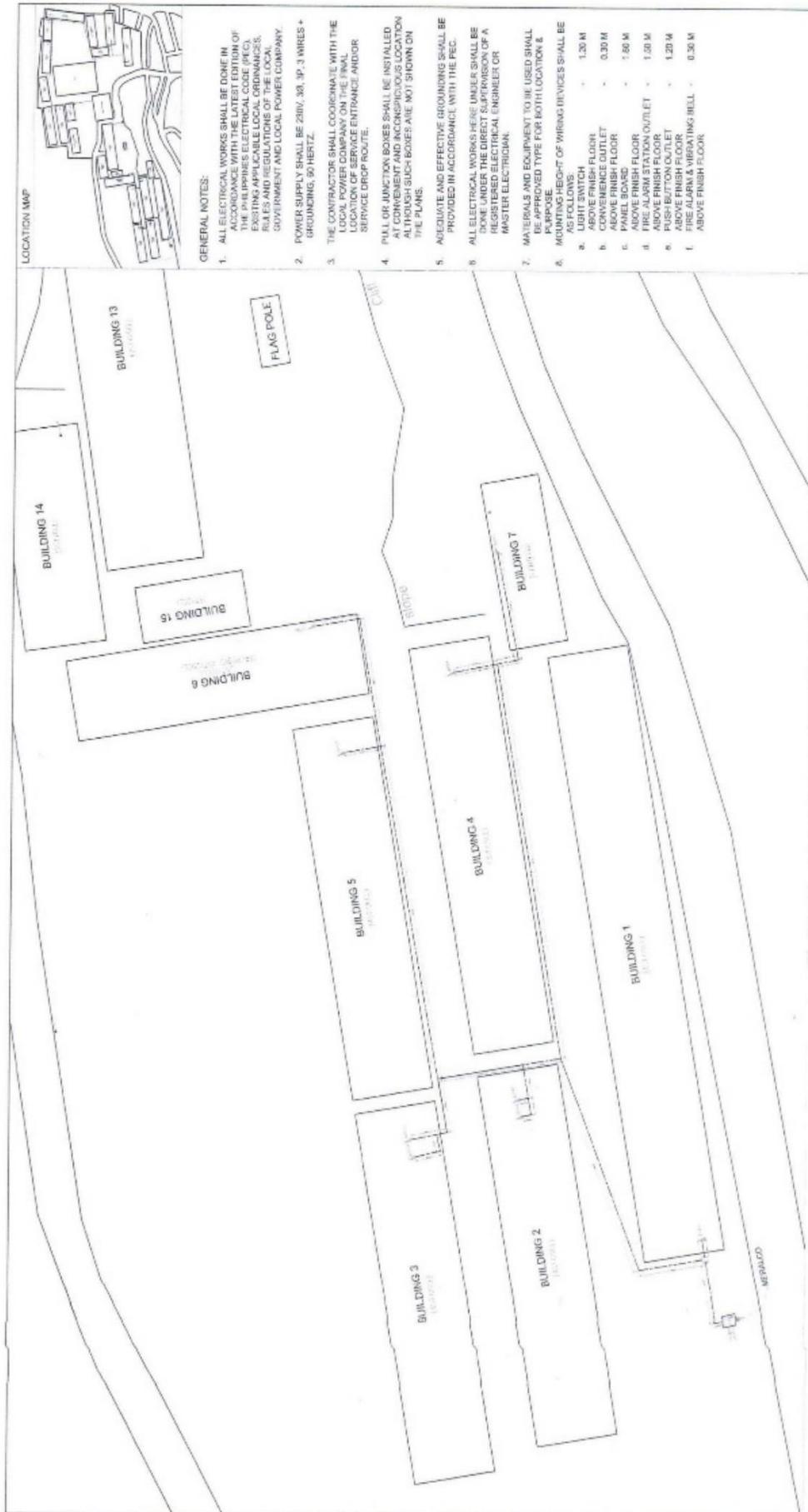
DESIGNED BY: MA. REGALE A. JARIS
 REGISTERED ELECTRICAL ENGINEER
 PROFESSIONAL ELECTRICAL ENGINEER
 REGISTERED PROFESSIONAL ENGINEER
 REGISTERED PROFESSIONAL ARCHITECT

APPROVED BY: VIOLETA M. GONZALES
 CHIEF OFFICE OF THE SCS

REVISIONS:

NO.	DESCRIPTION	DATE
1	AS SHOWN	

REPUBLIC OF THE PHILIPPINES
 DepEd
 DIVISION OFFICE - MINTINLUPA
 EDUCATIONAL FACILITIES DIVISION
 OFFICE OF THE SUPERVISOR



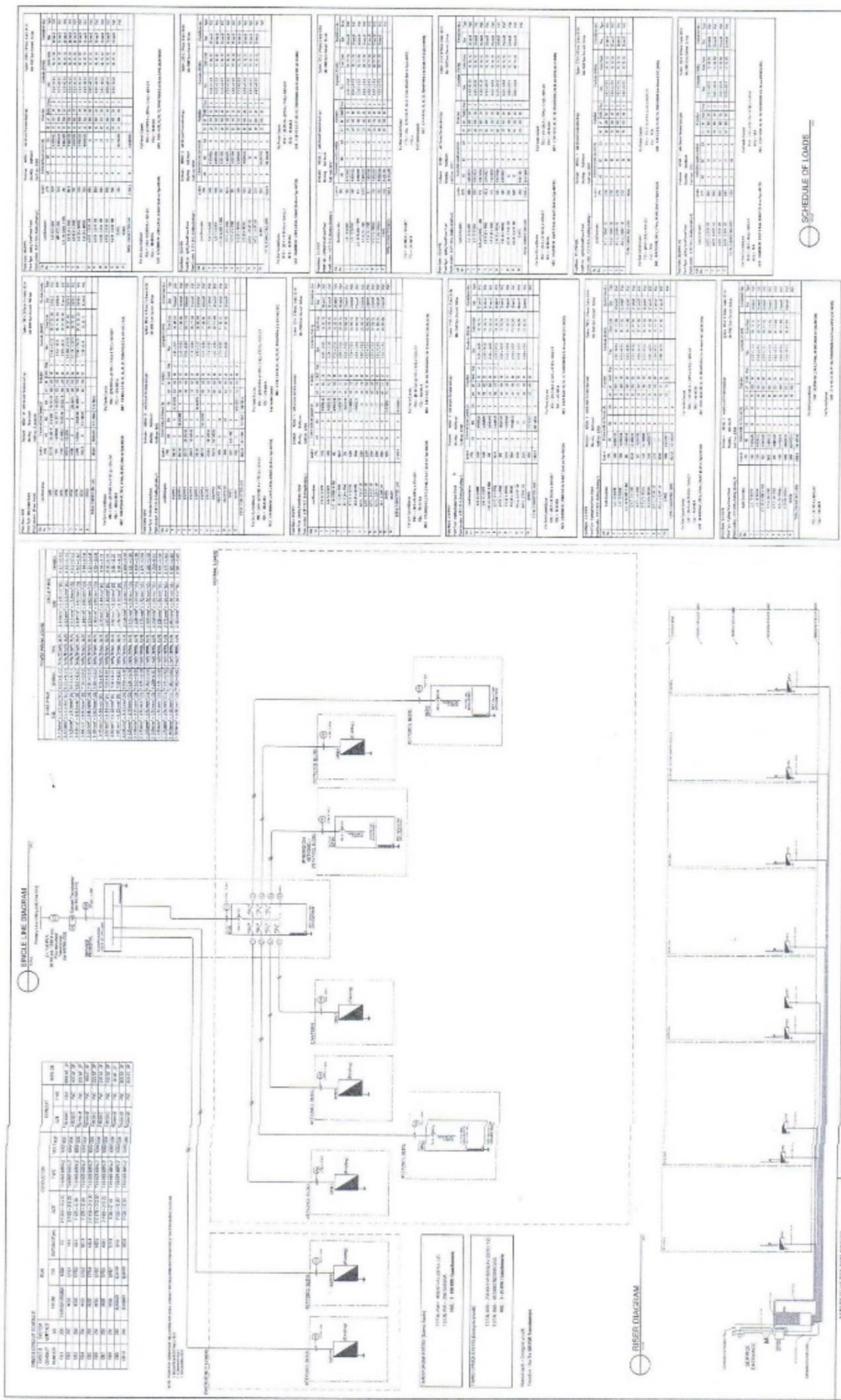
GENERAL NOTES:

1. ALL ELECTRICAL WORKS SHALL BE DONE IN ACCORDANCE WITH THE LATEST EDITION OF THE PHILIPPINE ELECTRICAL CODE (PEC), EXISTING APPLICABLE LOCAL ORDINANCES, AND THE REGULATIONS OF THE LOCAL GOVERNMENT AND LOCAL POWER COMPANY.
2. POWER SUPPLY SHALL BE 230V, 3Ø, 3 WIRES + GROUNDING, 90 HERTZ.
3. THE CONTRACTOR SHALL COORDINATE WITH THE LOCAL POWER COMPANY ON THE FINAL LOCATION OF SERVICE ENTRANCE AND/OR SERVICE DROP ROUTE.
4. PULL OUT JUNCTION BOXES SHALL BE INSTALLED AT CONVENIENCE AND INDICATED ON THE PLANS, ALTHOUGH SUCH BOXES ARE NOT SHOWN ON THE PLANS.
5. ADEQUATE AND EFFECTIVE GROUNDING SHALL BE PROVIDED IN ACCORDANCE WITH THE PEC.
6. ALL ELECTRICAL WORKS HERE UNDER SHALL BE DONE UNDER THE DIRECT SUPERVISION OF A REGISTERED ELECTRICAL ENGINEER OR MASTER ELECTRICIAN.
7. MATERIALS AND EQUIPMENT TO BE USED SHALL BE APPROVED TYPE FOR BOTH LOCATION & PURPOSE
8. MOUNTING HEIGHT OF WIRING SERVICES SHALL BE AS FOLLOWS:
 a. LIGHT SWITCH - 1.30 M
 b. ABOVE FINISH FLOOR - 0.30 M
 c. CONVENIENCE OUTLET - 1.60 M
 d. ABOVE FINISH FLOOR - 1.80 M
 e. FIRE ALARM STATION OUTLET - 1.20 M
 f. ABOVE FINISH FLOOR - 1.20 M
 g. PUSH BUTTON OUTLET - 1.20 M
 h. ABOVE FINISH FLOOR - 0.30 M
 i. ABOVE FINISH FLOOR

SITE ELECTRICAL LAY OUT
SCALE

- LEGEND: ALL SCHEDULES
- SERVICE ENTRANCE
 - SERVICE ENTRANCE PEDESTAL
 - DISTRIBUTION FEEDER LINES
 - DISTRIBUTION PANEL BOARD
 - ELECTRICAL HAND HOLE

	DEPARTMENT OF EDUCATION DepEd	SHEET NO. E-1
	PROJECT CODE AS SHOWN	SHEET QUANTITY 3
DRAWN BY: 	CHECKED BY: 	PROJECT TITLE: MUNTRILUPA NATIONAL HIGH SCHOOL (SENIOR HIGH SCHOOL) ELECTRICAL PLAN
DESIGNED BY: 	APPROVED BY: 	PROJECT TITLE: MUNTRILUPA CITY
REGISTERED ELECTRICAL ENGINEER 	REGISTERED ELECTRICAL ENGINEER 	PROJECT TITLE: MUNTRILUPA CITY



RECOMMENDING PERSON:
MA. REGINE L. GARCIA
 Planning Program Supervisor
OIC-chief

DESIGNED BY:
[Signature]
 PROFESSIONAL ELECTRICAL ENGINEER
 REG. NO. 101-10101
 DATE ISSUED: 08/22/2023

APPROVED BY:
VIOLETA M. GONZALES
 Assistant School Division Superintendent
[Signature]

PROJECT CODE:
 MUNTLUPA NATIONAL HIGH SCHOOL (SENIOR HIGH SCHOOL)
 ELECTRICAL PLAN

SHEET NO.:
 DEPTED
 EDUCATION FACILITIES DIVISION
 REGIONAL OFFICE - CAGAYAN

PROJECT TITLE: MUNTLUPA NATIONAL HIGH SCHOOL (SENIOR HIGH SCHOOL) ELECTRICAL PLAN

PROJECT CODE: MUNTLUPA CITY

SHEET NO: E-2 / 3

DEPARTMENT OF EDUCATION DeptD AS SHOWN

OWNER	PROJECT CODE	PROJECT TITLE	APPROVED BY	RECOMMENDING APPROVAL	CHECKED BY	DRAWN BY	SHEET NO.
DEPARTMENT OF EDUCATION DepEd		MUNTINLUPA NATIONAL HIGH SCHOOL (SENIOR HIGH SCHOOL) ELECTRICAL PLAN	<i>[Signature]</i> VIOLETA M. GONZALES MUNICIPAL ASSISTANT SCHOOLS DIVISION SUPERINTENDENT	<i>[Signature]</i> MA REGINE A. QUARTE Municipal Program Supervisor	<i>[Signature]</i> SEWARD SANCHEZ PROFESSIONAL ELECTRICAL ENGINEER	<i>[Signature]</i> ELECTRICAL ENGINEER	E-3 3
AS SHOWN		MUNTINLUPA CITY					

NO.	DESCRIPTION	UNIT	AMOUNT	LOADS	REMARKS
1	General Lighting	VA	10000	10000	
2	Recessed Lighting	VA	5000	5000	
3	Emergency Lighting	VA	2000	2000	
4	Power	VA	10000	10000	
5	Water Heating	VA	10000	10000	
6	Space Heating	VA	10000	10000	
7	Space Cooling	VA	10000	10000	
8	Other Loads	VA	10000	10000	
TOTAL					

SCHEDULE OF LOADS

Section VIII. Bill of Quantities

Notes on the Bill of Quantities

Objectives

The objectives of the Bill of Quantities are:

- a. to provide sufficient information on the quantities of Works to be performed to enable Bids to be prepared efficiently and accurately; and
- b. when a Contract has been entered into, to provide a priced Bill of Quantities for use in the periodic valuation of Works executed.

In order to attain these objectives, Works should be itemized in the Bill of Quantities in sufficient detail to distinguish between the different classes of Works, or between Works of the same nature carried out in different locations or in other circumstances which may give rise to different considerations of cost. Consistent with these requirements, the layout and content of the Bill of Quantities should be as simple and brief as possible.

Daywork Schedule

A Daywork Schedule should be included only if the probability of unforeseen work, outside the items included in the Bill of Quantities, is high. To facilitate checking by the Entity of the realism of rates quoted by the Bidders, the Daywork Schedule should normally comprise the following:

- a. A list of the various classes of labor, materials, and Constructional Plant for which basic daywork rates or prices are to be inserted by the Bidder, together with a statement of the conditions under which the Contractor will be paid for work executed on a daywork basis.
- b. Nominal quantities for each item of Daywork, to be priced by each Bidder at Daywork rates as Bid. The rate to be entered by the Bidder against each basic Daywork item should include the Contractor's profit, overheads, supervision, and other charges.

Provisional Sums

A general provision for physical contingencies (quantity overruns) may be made by including a provisional sum in the Summary Bill of Quantities. Similarly, a contingency allowance for possible price increases should be provided as a provisional sum in the Summary Bill of Quantities. The inclusion of such provisional sums often facilitates budgetary approval by avoiding the need to request periodic supplementary approvals as the future need arises. Where such provisional sums or contingency allowances are used, the SCC should state the manner in which they will be used, and under whose authority (usually the Procuring Entity's Representative's).

The estimated cost of specialized work to be carried out, or of special goods to be supplied, by other contractors should be indicated in the relevant part of the Bill of Quantities as a particular provisional sum with an appropriate brief description. A separate procurement procedure is normally carried out by the Procuring Entity to select such specialized contractors. To provide an element of competition among the Bidders in respect of any facilities, amenities, attendance, etc., to be provided by the successful Bidder as prime Contractor for the use and convenience of the specialist contractors, each related provisional sum should be followed by an item in the Bill of Quantities inviting the Bidder to quote a sum for such amenities, facilities, attendance, etc.

Signature Box

A signature box shall be added at the bottom of each page of the Bill of Quantities where the authorized representative of the Bidder shall affix his signature. Failure of the authorized representative to sign each and every page of the Bill of Quantities shall be a cause for rejection of his bid.

These Notes for Preparing a Bill of Quantities are intended only as information for the Procuring Entity or the person drafting the Bidding Documents. They should not be included in the final documents.

PROGRAM OF WORKS

BILL OF QUANTITIES

ELEC 2024 - NCR - MUNTINLUPA CITY - 001

School : Muntinlupa NHS	Date:
School I.D. : 305468	Budget Allocation: 22,251,970.63
Region : National Capital Region (NCR)	Engineering and Administrative Overhead: 0.00
Division : Muntinlupa City	Approved Budget for the Contract: 22,251,970.63
Project Title : <b style="text-align: center;">Upgrading of Electrical System	Completion Period:
	Minimum Required Manpower:
	Electrical Engineer, REE Master Electrician Electrician
	General Foreman Welder Carpenter
	Helper Mason Painter
Location : Poblacion, Muntinlupa City	Minimum Required Equipment:
	Hand Tools Welding Machine
	Clamp Tester Crimping Tools

Item No.	Description	% of Total	Unit	Quantity	Direct Cost		Adjusted Unit Cost	Adjusted Total Cost
					Total Cost	Unit Cost		
(1)	(2)	(3)	(4)	(5)	(6)	(7)	(8)	(9)
					(6)	(7)	(8)	(9)
					(6)	(6) / (5)	(8)	(9) / (5)
A	Temporary Facilities of Engineer							
A.1	Temporary Facilities		Month	6.18				-
B	Other General Requirements							
SPL.1	Project Billboard / Signage		Each	1.00				-
SPL.2	Construction Safety and Health		Month	6.18				-
B.2	Security/ Bill Deposit (Distribution Utility Application)		Ls	1.00				-
B.3	Testing and Commissioning		Ls	1.00				-
C	Mobilization and Demobilization							
	Mobilization and Demobilization		Ls	1.00				-
D	Service Entrance Concrete Pedestal, Panel Board Concrete Pedestals, Electrical DuctBanks, Electrical Handholes							
1	Earthworks							
1 (a)	Clearing and Grubbing		sq.m	312.19				-
1 (b)	Structural Excavation		cu m	207.29				-
1 (c)	Backfilling of Excavated Materials		cu m	128.49				-
2	Concreting Works (3000 psi)							
2 (b)	Structural Concrete (Footing and Slab on Fill)		cu m	3.45				-
2 (c)	Structural Concrete (Footing Tie Beam, Column, Suspended Slab, Girder/ Beam)		cu m	81.08				-
3	Rebar Works							
3 (a)	Reinforcing Steel Bar, Grade 40		kg	1,285.16				-
4	Formworks							
4 (a)	Installation and Removal of Formworks		sq.m	69.67				-
	Finishing Works							
5 (d)	Plain Cement Plaster Finish		sq.m	35.40				-
	Painting Works							
13 (a)	Masonry Painting		sq.m	35.40				-
F	Electrical Works							
E 10 (j)	Panel Board and Circuit Protections		Ls	1.00				-
E 10 (j)	Wires and Wiring Devices		Ls	1.00				-
E 10 (k)	Conduit Works, Boxes & Fittings		Ls	1.00				-
		100.00%					Total Construction Cost	

Prepared by:

Contractor's Representative

**PROGRAM OF WORKS
DETAILED COST ESTIMATE**

(TOTAL CONSTRUCTION COST/ ABC)
ELEC 2024 - NCR - MUNTINLUPA CITY - 001

PROJECT: Upgrading of Electrical System
SCHOOL: Muntinlupa NHS
LOCATION: Poblacion, Muntinlupa City
OWNER: DEPARTMENT OF EDUCATION

-

0

CONTRACT DURATION : 185 CD

ITEM NO.	DESCRIPTION	QUANTITY	UNIT	ESTIMATED DIRECT COST	MARK-UPS IN PERCENT		TOTAL MARK-UP		VAT (5%)	TOTAL INDIRECT COST	ADJUSTED TOTAL COST	ADJUSTED UNIT COST
					OCM	PROFIT	%	VALUE				
(1)	(2)	(3)	(4)	(5)	(6)	(7)	(8)	(9)	(10)	(11)	(12)	(13)
A	Temporary Facilities of Engineer											
A.1	Temporary Facilities	6.18	Month	-				(5) x (8)	5% [(5) + (9)]	(9) + (10)	(12)	(13)
B	Other General Requirements											
SPL.1	Project Billboard / Signage	1.00	Each	-								
SPL.2	Construction Safety and Health	6.18	Month	-								
B.2	Security/ Bill Deposit (Distribution Utility Application)	1.00	Ls	-								
B.3	Testing and Commissioning	1.00	Ls	-								
C	Mobilization and Demobilization											
	Mobilization and Demobilization	1.00	Ls	-								
D	Service Entrance Concrete Pedestal, Panel Board Concrete Pedestals, Electrical DuctBanks, Electrical Handholes											
1	Earthworks											
1 (a)	Clearing and Grubbing	312.19	sq.m	-								
1 (b)	Structural Excavation	207.29	cu m	-								
1 (c)	Backfilling of Excavated Materials	128.49	cu m	-								
2	Concreting Works (3000 psi)											
2 (b)	Structural Concrete (Footing and Slab on Fill)	3.45	cu m	-								
2 (c)	Structural Concrete (Footing Tie Beam, Column, Suspended Slab, Girder/ Beam)	81.08	cu m	-								
3	Rebar Works											
3 (a)	Reinforcing Steel Bar, Grade 40	1,285.16	kg	-								
4	Formworks											

**PROGRAM OF WORKS
DETAILED COST ESTIMATE**

(TOTAL CONSTRUCTION COST/ABC)
ELEC 2024 - NCR - MUNTINLUPA CITY - 001

PROJECT: Upgrading of Electrical System
SCHOOL: Muntinlupa NHS
LOCATION: Poblacion, Muntinlupa City
OWNER: DEPARTMENT OF EDUCATION

-

0

CONTRACT DURATION: 185 CD

ITEM NO.	DESCRIPTION	QUANTITY	UNIT	ESTIMATED DIRECT COST	MARK-UPS IN PERCENT		TOTAL MARK-UP		VAT (5%)	TOTAL INDIRECT COST	ADJUSTED TOTAL COST	ADJUSTED UNIT COST
					OCM	PROFIT	%	VALUE				
(1)	(2)	(3)	(4)	(5)	(6)	(7)	(8)	(9)	(10)	(11)	(12)	(13)
4 (a)	Installation and Removal of Formworks	69.67	sq.m	-			(6) + (7)	(5) x (8)	5% [(5) + (9)]	(9) + (10)	(5) + (11)	(12) / (3)
	Finishing Works											
5 (d)	Plain Cement Plaster Finish	35.40	sq.m	-								
	Painting Works											
13 (a)	Masonry Painting	35.40	sq.m	-								
F	Electrical Works											
E 10 (j)	Panel Board and Circuit Protections	1.00	Ls	-								
E 10 (i)	Wires and Wiring Devices	1.00	Ls	-								
E 10 (k)	Conduit Works, Boxes & Fittings	1.00	Ls	-								
	TOTAL CONSTRUCTION COST											

Prepared by:

Contractor's Representative



DETAILED UNIT PRICE ANALYSIS

Project : Upgrading of Electrical System

Location: Muntinlupa NHS, Muntinlupa City

Item: 1 (a)

Description: Clearing and Grubbing

Quantity: 312.19
Output per hour: 500.00
Unit: sq.m

A.	Designation of Personnel	No. of Person	No. of Hours	Hourly Rate	Amount
	Construction Foreman	1.00	0.62		
	Unskilled Laborer	2.00	0.62		
Sub-Total (Labor)					Php -
B.	Name / Capacity (Equipment)	No. of Units	No. of Hours	Hourly Rate	Amount
	Dump Truck (12 cu.yd.)	2	0.62		
	Payloader (1.5 cu.m.)	1	0.62		
	Bulldozer (155 Hp)	1	0.62		
Sub-Total (Equipment)					Php -
C.		Unit	Quantity	Unit Cost	Amount
Sub-Total (Materials)					Php
D.	Direct Cost (A+B+C)				Php
E.	Overhead,Contingencies and Miscellaneous (OCM)				0% of D.
F.	Contractor's Profit				0% of D.
G.	Value Added Tax (VAT)				5% of (D+E+F)
H.	Adjusted Total Cost (D+E+F+G)				Php
I.	Adjusted Unit Cost (H/Quantity)				Php



DETAILED UNIT PRICE ANALYSIS

Project : Upgrading of Electrical System

Location: Muntinlupa NHS, Muntinlupa City

Item: 1 (b)

Description: Structural Excavation

Quantity: 207.29
Output per hour: 20.00
Unit: cu m

A.	Designation of Personnel	No. of Person	No. of Hours	Hourly Rate	Amount
	Construction Foreman	1.00	10.36		
	Unskilled Laborer	3.00	10.36		
Sub-Total (Labor)					Php -
B.	Name / Capacity (Equipment)	No. of Units	No. of Hours	Hourly Rate	Amount
	Backhoe (0.80 cu.m.)	1	10.36		
	Dump Truck (12 cu.yd.)	2	10.36		
Sub-Total (Equipment)					Php -
C.		Unit	Quantity	Unit Cost	Amount
Sub-Total (Materials)					Php
D.	Direct Cost (A+B+C)				Php
E.	Overhead,Contingencies and Miscellaneous (OCM)				0% of D.
F.	Contractor's Profit				0% of D.
G.	Value Added Tax (VAT)				5% of (D+E+F)
H.	Adjusted Total Cost (D+E+F+G)				Php
I.	Adjusted Unit Cost (H/Quantity)				Php



DETAILED UNIT PRICE ANALYSIS

Project : Upgrading of Electrical System

Location: Muntinlupa NHS, Muntinlupa City

Item: 1 (c)

Description: Backfilling of Excavated Materials

Quantity: 128.49
Output per hour: 9.84
Unit: cu m

A.	Designation of Personnel	No. of Person	No. of Hours	Hourly Rate	Amount	
	Construction Foreman	1.00	13.06			
	Unskilled Laborer	3.00	13.06			
Sub-Total (Labor)					Php	-
B.	Name / Capacity (Equipment)	No. of Units	No. of Hours	Hourly Rate	Amount	
	Plate Compactor (5hp)	1	13.06			
	Backhoe (0.80 cu.m.)	2	13.06			
Sub-Total (Equipment)					Php	-
C.		Unit	Quantity	Unit Cost	Amount	
Sub-Total (Materials)					Php	-
D.	Direct Cost (A+B+C)			Php		
E.	Overhead,Contingencies and Miscellaneous (OCM)			0% of D.		
F.	Contractor's Profit			0% of D.		
G.	Value Added Tax (VAT)			5% of (D+E+F)		
H.	Adjusted Total Cost (D+E+F+G)			Php		
I.	Adjusted Unit Cost (H/Quantity)			Php		



DETAILED UNIT PRICE ANALYSIS

Project : Upgrading of Electrical System

Location: Muntinlupa NHS, Muntinlupa City

Item: 2 (b)

Description: Structural Concrete (Footing and Slab on Fill)

Quantity: 3.45
 Output per hour: 0.36
 Unit: cu m

A.	Designation of Personnel	No. of Person	No. of Hours	Hourly Rate	Amount
	Construction Foreman	1.00	9.65		
	Skilled Laborer	1.00	9.65		
	Unskilled Laborer	4.00	9.65		
Sub-Total (Labor)					Php -
B.	Name / Capacity (Equipment)	No. of Units	No. of Hours	Hourly Rate	Amount
	One - bagger Mixer	1	9.65		
Sub-Total (Equipment)					Php -
C.		Unit	Quantity	Unit Cost	Amount
	Portland Cement	cu.m	31.01		
	Washed Sand	bag	1.72		
	Crushed Gravel 3/4"	cu.m	3.45		
Sub-Total (Materials)					Php
D.	Direct Cost (A+B+C)				Php
E.	Overhead,Contingencies and Miscellaneous (OCM)				0% of D.
F.	Contractor's Profit				0% of D.
G.	Value Added Tax (VAT)				5% of (D+E+F)
H.	Adjusted Total Cost (D+E+F+G)				Php
I.	Adjusted Unit Cost (H/Quantity)				Php



DETAILED UNIT PRICE ANALYSIS

Project : Upgrading of Electrical System

Location: Muntinlupa NHS, Muntinlupa City

Item: 2 (c)

Description: Structural Concrete (Footing Tie Beam, Column, Suspended Slab, Girder/ Beam)

Quantity: 81.08
 Output per hour: 0.27
 Unit: cu m

A.	Designation of Personnel	No. of Person	No. of Hours	Hourly Rate	Amount
	Construction Foreman	1.00	300.30		
	Skilled Laborer	1.00	300.30		
	Unskilled Laborer	4.00	300.30		
Sub-Total (Labor)				Php	-
B.	Name / Capacity (Equipment)	No. of Units	No. of Hours	Hourly Rate	Amount
	One - bagger Mixer	1	300.30		
Sub-Total (Equipment)				Php	-
C.		Unit	Quantity	Unit Cost	Amount
	Portland Cement	cu.m	729.73		
	Washed Sand	bag	40.54		
	Crushed Gravel 3/4"	cu.m	81.08		
Sub-Total (Materials)				Php	
D.	Direct Cost (A+B+C)			Php	
E.	Overhead,Contingencies and Miscellaneous (OCM)			0% of D.	
F.	Contractor's Profit			0% of D.	
G.	Value Added Tax (VAT)			5% of (D+E+F)	
H.	Adjusted Total Cost (D+E+F+G)			Php	
I.	Adjusted Unit Cost (H/Quantity)			Php	



DETAILED UNIT PRICE ANALYSIS

Project : Upgrading of Electrical System

Location: Muntinlupa NHS, Muntinlupa City

Item: 3 (a)

Description: Reinforcing Steel Bar, Grade 40

Quantity: 1285.16
 Output per hour: 143.44
 Unit: kg

A.	Designation of Personnel	No. of Person	No. of Hours	Hourly Rate	Amount
	Construction Foreman	1.00	8.96		
	Skilled Laborer	3.00	8.96		
	Unskilled Laborer	12.00	8.96		
Sub-Total (Labor)					Php -
B.	Name / Capacity (Equipment)	No. of Units	No. of Hours	Hourly Rate	Amount
	Bar Cutter	1	8.96		
	Bar Bender	1	8.96		
Sub-Total (Equipment)					Php -
C.		Unit	Quantity	Unit Cost	Amount
	#16 G.I. Tie Wire	cu.m	25.70		
	Deformed Round Bars, Grade 40	kg	1,285.16		
Sub-Total (Materials)					Php
D.	Direct Cost (A+B+C)				Php
E.	Overhead,Contingencies and Miscellaneous (OCM)				0% of D.
F.	Contractor's Profit				0% of D.
G.	Value Added Tax (VAT)				5% of (D+E+F)
H.	Adjusted Total Cost (D+E+F+G)				Php
I.	Adjusted Unit Cost (H/Quantity)				Php



DETAILED UNIT PRICE ANALYSIS

Project : Upgrading of Electrical System

Location: Muntinlupa NHS, Muntinlupa City

Item: 4 (a)

Description: Installation and Removal of Formworks

Quantity: 69.67
Output per hour: 3.24
Unit: sq.m

A.	Designation of Personnel	No. of Person	No. of Hours	Hourly Rate	Amount
	Installation				
	Construction Foreman	1.00	21.50		
	Skilled Laborer	2.00	21.50		
	Unskilled Laborer	4.00	21.50		
	Stripping				
	Construction Foreman	1.00	8.82		
	Unskilled Laborer	6.00	8.82		
Sub-Total (Labor)					Php -
B.	Name / Capacity (Equipment)	No. of Units	No. of Hours	Hourly Rate	Amount
Sub-Total (Equipment)					Php -
C.		Unit	Quantity	Unit Cost	Amount
	Coco Lumber	bd. ft	500.90		
	Plywood Ordinary, 1/4" x 4' x 8'	pc	24.17		
	CWN, Assorted	kg	14.63		
Sub-Total (Materials)					Php
D.	Direct Cost (A+B+C)				Php
E.	Overhead,Contingencies and Miscellaneous (OCM)				0% of D.
F.	Contractor's Profit				0% of D.
G.	Value Added Tax (VAT)				5% of (D+E+F)
H.	Adjusted Total Cost (D+E+F+G)				Php
I.	Adjusted Unit Cost (H/Quantity)				Php



DETAILED UNIT PRICE ANALYSIS

Project : Upgrading of Electrical System

Location: Muntinlupa NHS, Muntinlupa City

Item: 5 (d)

Description: Plain Cement Plaster Finish

Quantity: 35.40
 Output per hour: 7.13
 Unit: sq.m

A.	Designation of Personnel	No. of Person	No. of Hours	Hourly Rate	Amount
	Construction Foreman	1.00	4.97		
	Skilled Laborer	2.00	4.97		
	Unskilled Laborer	4.00	4.97		
Sub-Total (Labor)				Php	-
B.	Name / Capacity (Equipment)	No. of Units	No. of Hours	Hourly Rate	Amount
Sub-Total (Equipment)				Php	-
C.		Unit	Quantity	Unit Cost	Amount
	Portland Cement	cu.m	11.68		
	Washed Sand	bag	0.96		
Sub-Total (Materials)				Php	
D.	Direct Cost (A+B+C)			Php	
E.	Overhead,Contingencies and Miscellaneous (OCM)			0% of D.	
F.	Contractor's Profit			0% of D.	
G.	Value Added Tax (VAT)			5% of (D+E+F)	
H.	Adjusted Total Cost (D+E+F+G)			Php	
I.	Adjusted Unit Cost (H/Quantity)			Php	



DETAILED UNIT PRICE ANALYSIS

Project : Upgrading of Electrical System

Location: Muntinlupa NHS, Muntinlupa City

Item: 13 (a)

Description: Masonry Painting

Quantity: 35.40
Output per hour: 2.10
Unit: sq.m

A.	Designation of Personnel	No. of Person	No. of Hours	Hourly Rate	Amount
	Construction Foreman	1.00	16.86		
	Skilled Laborer	2.00	16.86		
	Unskilled Laborer	1.00	16.86		
Sub-Total (Labor)					Php -
B.	Name / Capacity (Equipment)	No. of Units	No. of Hours	Hourly Rate	Amount
Sub-Total (Equipment)					Php -
C.		Unit	Quantity	Unit Cost	Amount
	Neutralizer	cu.m	0.71		
	Latex, Flat	bag	2.83		
	Masonry Putty	cu.m	1.77		
	Latex, Semi Gloss	cu.m	2.83		
	Acri Color	pc	0.18		
Sub-Total (Materials)					Php
D.	Direct Cost (A+B+C)				Php
E.	Overhead,Contingencies and Miscellaneous (OCM)				0% of D.
F.	Contractor's Profit				0% of D.
G.	Value Added Tax (VAT)				5% of (D+E+F)
H.	Adjusted Total Cost (D+E+F+G)				Php
I.	Adjusted Unit Cost (H/Quantity)				Php



DETAILED UNIT PRICE ANALYSIS

Project : Upgrading of Electrical System

Location: Muntinlupa NHS, Muntinlupa City

Item: E 10 (j)

Description: Panel Board and Circuit Protections

Quantity: 1.00
Output: 1.00
Unit: Ls

A.	Designation of Personnel	No. of Person	No. of Hours	Hourly Rate	Amount
	Construction Foreman	1	526.58		
	Skilled Laborer	1	526.58		
	Unskilled Laborer	1	526.58		
Sub-Total (Labor)				Php	-
B.	Name / Capacity (Equipment)	No. of Units	No. of Hours	Hourly Rate	Amount
	Electric Drill	1	526.58		
Sub-Total (Equipment)				Php	-
C.	Name / Specification (Materials)	Unit	Quantity	Unit Cost	Amount
	MSB [SHS] (NEMA - 3R with Ground Terminal bus/Lugs) in NEMA - 3R Enclosure including BusBar & Accessories & Mechanical Lugs	set	1.00		
	DPB2 [SHS] (NEMA - 1 with Ground Terminal bus/Lugs) in NEMA - 1 Enclosure including BusBar & Accessories & Mechanical Lugs	set	1.00		
	DPB3 [SHS] (NEMA - 1 with Ground Terminal bus/Lugs) in NEMA - 1 Enclosure including BusBar & Accessories & Mechanical Lugs	set	1.00		
	DPB6 [SHS] (NEMA - 1 with Ground Terminal bus/Lugs) in NEMA - 1 Enclosure including BusBar & Accessories & Mechanical Lugs	set	1.00		
	MSB [JHS] (NEMA - 3R with Ground Terminal bus/Lugs) in NEMA - 3R Enclosure including BusBar & Accessories & Mechanical Lugs	set	1.00		
	MDPB1 [JHS] (NEMA - 3R with Ground Terminal bus/Lugs) in NEMA - 3R Enclosure including BusBar & Accessories & Mechanical Lugs	set	1.00		
	MDPB2 [JHS] (NEMA - 3R with Ground Terminal bus/Lugs) in NEMA - 3R Enclosure including BusBar & Accessories & Mechanical Lugs	set	1.00		
	DPB7 [JHS] (NEMA - 1 with Ground Terminal bus/Lugs) in NEMA - 1 Enclosure including BusBar & Accessories & Mechanical Lugs	set	1.00		
	DPB11 [JHS] (NEMA - 1 with Ground Terminal bus/Lugs) in NEMA - 1 Enclosure including BusBar & Accessories & Mechanical Lugs	set	1.00		
	DPB13 [JHS] (NEMA - 1 with Ground Terminal bus/Lugs) in NEMA - 1 Enclosure including BusBar & Accessories & Mechanical Lugs	set	1.00		
	Busbar Gutter (NEMA 3R), 1600A, 3p, 3ph, 230V with mechanical lugs & complete accessories	set	1.00		
	Busbar Gutter (NEMA 3R), 1000A, 3p, 3ph, 230V with mechanical lugs & complete accessories	set	1.00		
	DPB9 [JHS] (NEMA - 1 with Ground Terminal bus/Lugs) in NEMA - 1 Enclosure including BusBar & Accessories & Mechanical Lugs	set	1.00		
	1600A, 3P Molded Case Circuit Breaker	set	1.00		
	1000A, 3P Molded Case Circuit Breaker	set	1.00		
	600A, 3P Molded Case Circuit Breaker	set	4.00		
	400A, 3P Molded Case Circuit Breaker	set	1.00		
	200A, 3P Molded Case Circuit Breaker	set	4.00		
	160A, 3P Molded Case Circuit Breaker	set	9.00		



DETAILED UNIT PRICE ANALYSIS

Project : Upgrading of Electrical System

Location: Muntinlupa NHS, Muntinlupa City

	125A, 3P Molded Case Circuit Breaker	set	3.00	
	250A, 2P Molded Case Circuit Breaker	set	1.00	
	225A, 2P Molded Case Circuit Breaker	set	4.00	
	200A, 2P Molded Case Circuit Breaker	set	2.00	
	160A, 2P Molded Case Circuit Breaker	set	1.00	
	100A, 2P Molded Case Circuit Breaker	set	1.00	
	80A, 2P Molded Case Circuit Breaker	set	2.00	
	75A, 2P Molded Case Circuit Breaker	set	1.00	
	Grounding Rod, 3.0m x 25mm dia.	pc	11.00	
Sub-Total (Materials)				Php
D.	Direct Cost (A+B+C)			Php
E.	Overhead,Contingencies and Miscellaneous (OCM)		0% of D.	
F.	Contractor's Profit		0% of D.	
G.	Value Added Tax (VAT)		5% of (D+E+F)	
H.	Adjusted Total Cost (D+E+F+G)			Php
I.	Adjusted Unit Cost (H/Quantity)			Php



DETAILED UNIT PRICE ANALYSIS

Project : Upgrading of Electrical System

Location: Muntinlupa NHS, Muntinlupa City

Item: E 10 (i)

Description: Wires and Wiring Devices

Quantity: 1.00
Output: 1.00
Unit: Ls

A.	Designation of Personnel	No. of Person	No. of Hours	Hourly Rate	Amount
	Construction Foreman	1	586.92		
	Skilled Laborer	2	586.92		
	Unskilled Laborer	1	586.92		
Sub-Total (Labor)					Php -
B.	Name / Capacity (Equipment)	No. of Units	No. of Hours	Hourly Rate	Amount
	Electric Drill	1	586.92		
	Cable Puller/Tensioner	1	586.92		
Sub-Total (Equipment)					Php -
C.	Name / Specification (Materials)	Unit	Quantity	Unit Cost	Amount
	14 mm ² , Wire, Copper, Insulated, Stranded 600 Volts, THHN/THWN-2	m	301.20		
	22 mm ² , Wire, Copper, Insulated, Stranded 600 Volts, THHN/THWN-2	m	722.74		
	30 mm ² , Wire, Copper, Insulated, Stranded 600 Volts, THHN/THWN-2	m	1,837.80		
	38 mm ² , Wire, Copper, Insulated, Stranded 600 Volts, THHN/THWN-2	m	602.41		
	50 mm ² , Wire, Copper, Insulated, Stranded 600 Volts, THHN/THWN-2	m	759.64		
	80 mm ² , Wire, Copper, Insulated, Stranded 600 Volts, THHN/THWN-2	m	2,143.22		
	100 mm ² , Wire, Copper, Insulated, Stranded 600 Volts, THHN/THWN-2	m	1,083.06		
	125 mm ² , Wire, Copper, Insulated, Stranded 600 Volts, THHN/THWN-2	m	1,718.25		
	150 mm ² , Wire, Copper, Insulated, Stranded 600 Volts, THHN/THWN-2	m	1,561.36		
	175 mm ² , Wire, Copper, Insulated, Stranded 600 Volts, THHN/THWN-2	m	868.33		
	200 mm ² , Wire, Copper, Insulated, Stranded 600 Volts, THHN/THWN-2	m	1,035.62		
	250 mm ² , Wire, Copper, Insulated, Stranded 600 Volts, THHN/THWN-2	m	321.30		
Sub-Total (Materials)					Php
D.	Direct Cost (A+B+C)				Php
E.	Overhead,Contingencies and Miscellaneous (OCM)				0% of D.
F.	Contractor's Profit				0% of D.
G.	Value Added Tax (VAT)				5% of (D+E+F)
H.	Adjusted Total Cost (D+E+F+G)				Php
I.	Adjusted Unit Cost (H/Quantity)				Php



DETAILED UNIT PRICE ANALYSIS

Project : Upgrading of Electrical System

Location: Muntinlupa NHS, Muntinlupa City

Item: E 10 (k)

Description: Conduit Works, Boxes & Fittings

Quantity: 1.00
Output: 1.00
Unit: Ls

A.	Designation of Personnel	No. of Person	No. of Hours	Hourly Rate	Amount
	Construction Foreman	1	430.92		
	Skilled Laborer	2	430.92		
	Unskilled Laborer	1	430.92		
Sub-Total (Labor)					Php -
B.	Name / Capacity (Equipment)	No. of Units	No. of Hours	Hourly Rate	Amount
	Electric Drill	1	430.92		
	Electric Grinder	1	430.92		
Sub-Total (Equipment)					Php -
C.	Name / Specification (Materials)	Unit	Quantity	Unit Cost	Amount
	80 mm Ø x 3m, Socket Type PVC	pc	130.00		
	50 mm Ø x 3m, Socket Type PVC	pc	1,015.00		
	40 mm Ø x 3m, Socket Type PVC	pc	116.00		
	80 mm Ø, PVC Adapter	pc	2.00		
	50 mm Ø, PVC Adapter	pc	31.00		
	40 mm Ø, PVC Adapter	pc	13.00		
	40 mm Ø, PVC Locknut & Bushing	pc	13.00		
	50 mm Ø, PVC Locknut & Bushing	pc	154.00		
	80 mm Ø, PVC Locknut & Bushing	pc	6.00		
	100 mm Ø x 3m, Rigid Steel Conduit (RSC)	pc	40.00		
	Entrance Cap 100 mm Ø (Diecast Aluminum)	pc	10.00		
	100 mm Ø, RSC Locknut & Bushing	pc	10.00		
	100 mm Ø, RSC Coupling	pc	40.00		



DETAILED UNIT PRICE ANALYSIS

Project : Upgrading of Electrical System

Location: Muntinlupa NHS, Muntinlupa City

	100 mm Ø, U-bolt with nut	pc	80.00		
	Steel Angle Bar 6mm x 3" x 3" x 6m	pc	7.00		
	Anchor bolt	pc	80.00		
	Electrical Warning Tape, RED "DANGER" Color	roll	4.00		
	Duct Bank Spacer	pc	558.00		
	Duct seal	pack	43.00		
	5/8" Ø Oval Eyebolt galvanized	pc	2.00		
	5/8" Ø Machine bolt galvanized fully threaded w/ nut and washers	pc	4.00		
Sub-Total (Materials)				Php	-
D.	Direct Cost (A+B+C)			Php	
E.	Overhead,Contingencies and Miscellaneous (OCM)			0% of D.	
F.	Contractor's Profit			0% of D.	
G.	Value Added Tax (VAT)			5% of (D+E+F)	
H.	Adjusted Total Cost (D+E+F+G)			Php	
I.	Adjusted Unit Cost (H/Quantity)			Php	



DETAILED UNIT PRICE ANALYSIS

Project : Upgrading of Electrical System

Location: Muntinlupa NHS, Muntinlupa City

Item: A.1

Description: Temporary Facilities

Quantity: 6.18
Output : 1.00
Unit: Month

A.	Designation of Personnel	No. of Person	No. of Hours	Hourly Rate	Amount
Sub-Total (Labor)					Php -
B.	Name / Capacity (Equipment)	No. of Units	No. of Hours	Hourly Rate	Amount
Sub-Total (Equipment)					Php -
C.	Name / Specification (Materials)	Unit	Quantity	Unit Cost	Amount
	Rental of Office/ Storage House (including light and water)	Month	6.18		
Sub-Total (Materials)					Php
D.	Direct Cost (A+B+C)				Php
E.	Overhead,Contingencies and Miscellaneous (Ocm)				0% of D.
F.	Contractor's Profit				0% of D.
G.	Value Added Tax (VAT)				5% of (D+E+F)
H.	Adjusted Total Cost (D+E+F+G)				Php
I.	Adjusted Unit Cost (H/Quantity)				Php



DETAILED UNIT PRICE ANALYSIS

Project : Upgrading of Electrical System

Location: Muntinlupa NHS, Muntinlupa City

Item: SPL.1

Description: Project Billboard

Quantity: 1.00
Output: 1.00
Unit: Each

A.	Designation of Personnel	No. of Person	No. of Hours	Hourly Rate	Amount
	Construction Foreman	1	4.00		
	Skilled Laborer	1	4.00		
	Unskilled Laborer	1	4.00		
Sub-Total (Labor)					Php -
B.	Name / Capacity (Equipment)	No. of Units	No. of Hours	Hourly Rate	Amount
Sub-Total (Equipment)					Php -
C.	Name / Specification (Materials)	Unit	Quantity	Unit Cost	Amount
	8' x 8' Tarpaulin, 2 sets	sq ft	64.00		
	Good Lumber (Frames)	bd.ft	48.00		
	Assorted CW Nails	kg	1.00		
Sub-Total (Materials)					Php
D.	Direct Cost (A+B+C)				Php
E.	Overhead,Contingencies and Miscellaneous (Ocm)				0% of D.
F.	Contractor's Profit				0% of D.
G.	Value Added Tax (VAT)				5% of (D+E+F)
H.	Adjusted Total Cost (D+E+F+G)				Php
I.	Adjusted Unit Cost (H/Quantity)				Php



DETAILED UNIT PRICE ANALYSIS

Project : Upgrading of Electrical System

Location: Muntinlupa NHS, Muntinlupa City

Item: SPL.2

Description: Construction Safety and Health

Quantity: 6.18
Output : 1.00
Unit: Month

A.	Designation of Personnel	No. of Person	No. of Hours	Hourly Rate	Amount
	Safety Officer	1	1482.71		
	First Aider	1	1482.71		
Sub-Total (Labor)					Php -
B.	Name / Capacity (Equipment)	No. of Units	No. of Hours	Hourly Rate	Amount
Sub-Total (Equipment)					Php -
C.	Name / Specification (Materials)	Unit	Quantity	Unit Cost	Amount
	First Aid Kit	Ls	1		
	Personal Protective equipment (PPE)				
	Safety Helmet	man - days	10		
	Safety Shoes	man - days	10		
	Safety Gloves	man - days	25		
	Signages and Barricades				
	PPE Signage (4' x 8')	set	1		
	Safety First (4' x 4')	set	1		
	Warning Signs (2' x 3')	set	1		
	Caution Tape, 100 ft	roll	1		
Sub-Total (Materials)					Php
D.	Direct Cost (A+B+C)				Php
E.	Overhead,Contingencies and Miscellaneous (Ocm)				0% of D.
F.	Contractor's Profit				0% of D.
G.	Value Added Tax (VAT)				5% of (D+E+F)
H.	Adjusted Total Cost (D+E+F+G)				Php
I.	Adjusted Unit Cost (H/Quantity)				Php



DETAILED UNIT PRICE ANALYSIS

Project : Upgrading of Electrical System

Location: Muntinlupa NHS, Muntinlupa City

Item: B.2

Description: Security/ Bill Deposit (Distribution Utility Application)

Quantity: 1.00
 Output: 1.00
 Unit: Ls

A.	Designation of Personnel	No. of Person	No. of Hours	Hourly Rate	Amount
Sub-Total (Labor)				Php	-
B.	Name / Capacity (Equipment)	No. of Units	No. of Hours	Hourly Rate	Amount
Sub-Total (Equipment)				Php	-
C.	Name / Specification (Materials)	Unit	Quantity	Unit Cost	Amount
	Security/ Bill Deposit	Ls	1.00		
Sub-Total (Materials)				Php	
D.	Direct Cost (A+B+C)			Php	
E.	Overhead,Contingencies and Miscellaneous (OCM)			0% of D.	
F.	Contractor's Profit			0% of D.	
G.	Value Added Tax (VAT)			5% of (D+E+F)	
H.	Adjusted Total Cost (D+E+F+G)			Php	
I.	Adjusted Unit Cost (H/Quantity)			Php	



DEPARTMENT OF EDUCATION
EDUCATION FACILITIES DIVISION
 DepEd Complex, Meralco Avenue, Pasig City



DETAILED UNIT PRICE ANALYSIS

Project : Upgrading of Electrical System

Location: Muntinlupa NHS, Muntinlupa City

Item: B.3

Description: Testing and Commissioning

Quantity: 1.00
Output: 1.00
Unit: Ls

A.	Designation of Personnel	No. of Person	No. of Hours	Hourly Rate	Amount
	Construction Foreman	1	8.00		
	Skilled Laborer	1	8.00		
	Unskilled Laborer	1	8.00		
Sub-Total (Labor)					Php -
B.	Name / Capacity (Equipment)	No. of Units	No. of Hours	Hourly Rate	Amount
	Megger Tester (Certified and Calibrated)	1	8.00		
Sub-Total (Equipment)					Php -
C.	Name / Specification (Materials)	Unit	Quantity	Unit Cost	Amount
Sub-Total (Materials)					Php
D.	Direct Cost (A+B+C)				Php
E.	Overhead,Contingencies and Miscellaneous (OCM)				0% of D.
F.	Contractor's Profit				0% of D.
G.	Value Added Tax (VAT)				5% of (D+E+F)
H.	Adjusted Total Cost (D+E+F+G)				Php
I.	Adjusted Unit Cost (H/Quantity)				Php



DETAILED UNIT PRICE ANALYSIS

Project : Upgrading of Electrical System

Location: Muntinlupa NHS, Muntinlupa City

Item: C.1

Description: Mobilization and Demobilization

Quantity: 1.00
Output : 1.00
Unit: Ls

A.	Designation of Personnel	No. of Person	No. of Hours	Hourly Rate	Amount
Sub-Total (Labor)					Php -
B.	Name / Capacity (Equipment)	No. of Units	No. of Hours	Hourly Rate	Amount
	Self Loading Truck and Accessories	1	24		
Sub-Total (Equipment)					Php -
C.	Name / Specification (Materials)	Unit	Quantity	Unit Cost	Amount
Sub-Total (Materials)					Php
D.	Direct Cost (A+B+C)				Php
E.	Overhead,Contingencies and Miscellaneous (Ocm)				0% of D.
F.	Contractor's Profit				0% of D.
G.	Value Added Tax (VAT)				5% of (D+E+F)
H.	Adjusted Total Cost (D+E+F+G)				Php
I.	Adjusted Unit Cost (H/Quantity)				Php

Section IX. Checklist of Technical and Financial Documents

Notes on the Checklist of Technical and Financial Documents

The prescribed documents in the checklist are mandatory to be submitted in the Bid, but shall be subject to the following:

- a. GPPB Resolution No. 09-2020 on the efficient procurement measures during a State of Calamity or other similar issuances that shall allow the use of alternate documents in lieu of the mandated requirements; or
- b. any subsequent GPPB issuances adjusting the documentary requirements after the effectivity of the adoption of the PBDs.

The BAC shall be checking the submitted documents of each Bidder against this checklist to ascertain if they are all present, using a non-discretionary “pass/fail” criterion pursuant to Section 30 of the 2016 revised IRR of RA No. 9184.

Checklist of Technical and Financial Documents

I. TECHNICAL COMPONENT ENVELOPE

Class “A” Documents

Legal Documents

- (a) Valid PhilGEPS Registration Certificate (Platinum Membership) (all pages) **in accordance with Section 8.5.2 of the IRR; or**
- (b) Registration certificate from Securities and Exchange Commission (SEC), Department of Trade and Industry (DTI) for sole proprietorship, or Cooperative Development Authority (CDA) for cooperatives or its equivalent document, **and**
- (c) Mayor’s or Business permit issued by the city municipality where the principal place of business of the prospective bidder is located, or the equivalent document for Exclusive Economic Zone or Areas; **and**
- (d) Tax Clearance per E.O. No. 298, s. 2005, as finally reviewed and approved by the Bureau of Internal Revenue (BIR)

Technical Documents

- (e) Statement of the prospective bidder of all its ongoing government and private contracts, including contracts awarded but not yet started, if any, whether similar or not similar in nature and complexity to the contract to be bid; **and**
- (f) Statement of the bidder’s Single Largest Completed Contract (SLCC) similar to the contract to be bid, except under conditions provided under the rules; **and**
- (g) Special PCAB License in case of Joint Ventures **and** registration for the type and cost of the contract to be bid; **and**
- (h) Original copy of Bid Security. If in the form of a Surety Bond, submit also a certification issued by the Insurance Commission **or** original copy of Notarized Bid Securing Declaration; **and**
- (i) Project Requirements, which shall include the following:
 - 18.2. Organizational chart for the contract to be bid;
 - 18.3. List of contractor’s key personnel (*e.g.*, Project Manager, Project Engineers, Materials Engineers, and Foremen), to be assigned to the contract to be bid, with their complete qualification and experience data;
 - 18.4. List of contractor’s major equipment units, which are owned, leased, and/or under purchase agreements, supported by proof of ownership or certification of availability of equipment from the equipment lessor/vendor for the duration of the project, as the case may be; **and**
- (j) Original duly signed Omnibus Sworn Statement (OSS) **and** if applicable, Original Notarized Secretary’s Certificate in case of a corporation,

partnership, or cooperative; or Original Special Power of Attorney of all members of the joint venture giving full power and authority to its officer to sign the OSS and do acts to represent the Bidder.

Financial Documents

- (k) The prospective bidder's computation of Net Financial Contracting Capacity (NFCC).

Class "B" Documents

- (l) If applicable, duly signed joint venture agreement (JVA) in accordance with RA No. 4566 and its IRR in case the joint venture is already in existence **or** duly notarized statements from all the potential joint venture partners stating that they will enter into and abide by the provisions of the JVA in the instance that the bid is successful.

II. FINANCIAL COMPONENT ENVELOPE

- (m) Original of duly signed and accomplished Financial Bid Form; **and**

Other documentary requirements under RA No. 9184

- (n) Original of duly signed Bid Prices in the Bill of Quantities; **and**
- (o) Duly accomplished Detailed Estimates Form, including a summary sheet indicating the unit prices of construction materials, labor rates, and equipment rentals used in coming up with the Bid; **and**
- (p) Cash Flow by Quarter.

